

Hongling

PROFESSIONAL BAKERY
EQUIPMENT FOR 45 YEARS

专业烘焙设备 45年 2024.12.3

红菱设备 | 烘焙至专



UHL

红菱

PROFESSIONAL BAKING EQUIPMENT FOR 40+ YEARS

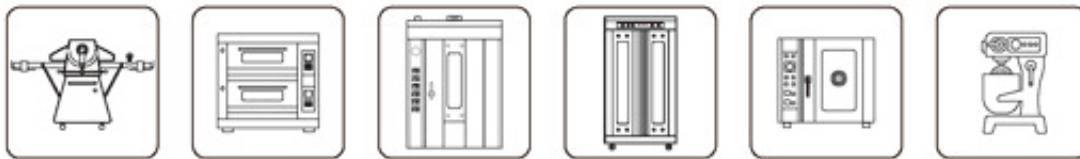


■ GUANGZHOU HONGLING ELECTRIC HEATING EQUIPMENT CO.,LTD ■

■ GUANGZHOU GUANGLING KITCHEN EQUIPMENT CO.,LTD ■



PROFESSIONAL BAKING EQUIPMENT FOR 40+ YEARS



ABOUT HONGLING

Established in 1979.

Guangzhou Hongling was established in 1979, with more than 43 years experiences of manufacturing technology. Forming a management system integrating R&D, design, production and sales.

We always insist the business tenet of "Quality First and Customer-Oriented".The team has senior engineers, engineers, technicians and other professionals of the R&D staff. The factory occupies 15,000 square meters workshop and there are 200 employees that the company has strong OEM/ODM capabilities.

Guangzhou Hongling professional in R & D, manufacturing and sales tunnel oven, rotary oven, electric oven, gas oven, pizza oven, electric steamer proofer, spiral mixer, planetary mixer, dough divider, dough sheeter up to 180 different ancillary products, annual sales more than 80,000 units. Some products received CE, UL, ISO9001 quality system certification. The company is committed to providing professional complete range of bakery equipment for bakers from all over the world.

In the recent years, we make great progress. It is committed to remodeling baking supreme brand image, the introduction of a variety of automatic advanced production equipment such as: large laser cutting machine; computer-controlled CNC punching machine, bending machine; CNC gas burner drilling machine, etc.So the key components production become more and more standardized and precise, and ensure the quality of the product increasing continually.

With the innovative, pragmatic, pioneering enterprise spirit, and the integrity service concept, Guangzhou Hongling brand products have sold to more than 80 countries in Europe, Middle East, Southeast Asia, Africa. And the company has more than 180 distribution agents at domestic market, sold to more than 80 cities in China.



关于红菱

广州红菱电热设备有限公司，于1979年开始生产《红菱牌》系列食品烘焙设备，系全国最早生产食品机械的企业之一。

至今红菱公司拥有超过45年的研发、生产和销售经验。技术力量雄厚，生产设备和检测设备齐全，不断引进如数控激光切割机、数控冲床、数控折弯机、数控钻孔机、数控焊接机械手等先进设备。80年代从欧洲瑞典引进“康泰尔”先进发热管生产线，使红菱牌电热烘炉拥有发热元器件生产制造核心技术，一度引领市场的技术发展方向成为行业标杆。

历年来，红菱公司产品荣获“广州市优质产品”殊荣，先后被中国食品工业协会授予“中国烘焙十大设备企业”，中国焙烤食品糖制品工业协会授予“中国改革开放四十年焙烤食品糖制品产业优秀企业”，“突出贡献奖”。还获得如厨具业“百强企业”“广东省烘焙行业杰出企业”，“广东省烘焙企业百强”“广东省烘焙企业十强”。连续36年被评为“广东省守合同重信用企业”。

公司始终坚持质量第一，客户至上的生产和服务宗旨，成立由资深专业工程技术人员组成的研发团队，研发适合烘焙食品行业需要的系列产品（包括远红外电烤炉、燃气烤炉、热风旋转炉、隧道炉、醒发箱、多功能电热锅、肉类烧烤炉、和面机、搅拌机、开酥机、电热蒸炉等十三大系列一百多个型号产品）。现有公司员工200多人，车间面积2万余平方米，生产产品销往全国各地及全球60多个国家，越来越多产品获得欧盟CE和北美UL&ETL质量认证。

凭着创新、务实、开拓的企业精神，诚信为本的服务理念，红菱公司将继续提供优质产品，为全社会服务。

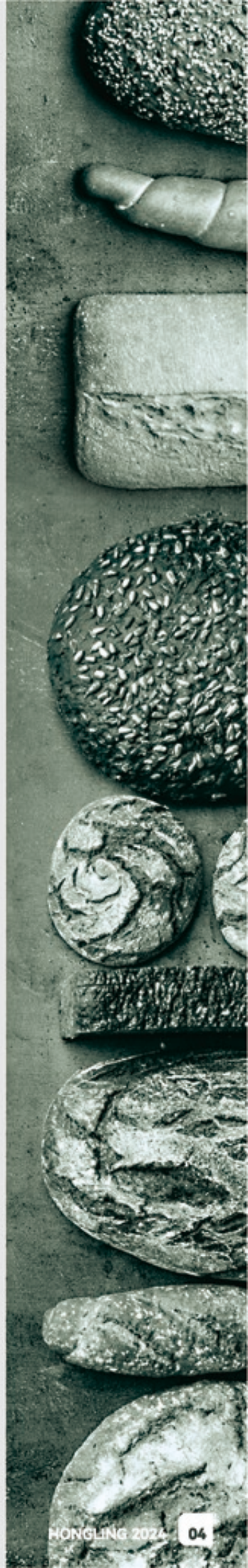
品质源于专业，诚信铸就品牌，广州红菱期待与你共创未来。



Contents 目录

Rotary Rack Oven	09-10
热风旋转炉	
Convection Oven	11-12
热风循环炉	
Luxury Gas Deck Oven	13-14
层叠式豪华燃气层式烤箱	
Gas Deck Oven	15-16
燃气层式烤箱	
Luxury Electric Oven	17-18
层叠式豪华电热烘炉	
Electric Deck Oven	19-21
远红外电热烤箱	
Pizza Oven	22-24
层式披萨烤箱	

Conveyor Pizza Oven	25-26
履带式披萨炉	
Proofer	27-30
面团醒发箱	
Spiral Mixer	31-33
和面机	
Food Mixer	34
食品搅拌机	
Planetary Mixer	35-38
食品搅拌机	
Dough Sheeter	39-42
起酥机	
Bread Slicer	43
切片机	
Divider and Moulder	44-46
烘焙机械	
Pizza Dough Roller	47
披萨压面机	
Rice Steamer	48
蒸饭车	
Pressure Fryer	49
压力炸炉	
Cake Cream Machine	49
蛋糕奶油机	
Working Table.....	50
工作台	
Baking Tray and Trolley	51-53
烤盘/饼盘车	
Food Equipment	54-56
食品设备	
Kitchen Equipment (US type)	57-61
厨房设备 (美式)	
Deep Fryer Series	62-64
油炸机设备系列	
Griddle Series	65-66
烤架设备系列	
Bain Marie Series, Food display warmer	66
小吃烧烤设备系列	
Snack & Grill Equipment Series	66-69
炸鸡汉堡设备系列	
Fried Chicken & Hamburger Equipent Series	70





- The First Bakery Oven Manufacturer in China Since 1979.
- ISO9001 Quality System Certification for 22 Consecutive Years
- “Credit Excellent Enterprise” for 22 Consecutive Years





CERTIFICATION





Electric Heater Production Line was Imported From Sweden in 1985.
The only and one oven factory whom make the heater by itself.



CNC Laser Cutting Machine (3x)



Omada Bending Machine (3x)



Gas Burner CNC Drilling Machine (5x)



Heater Manufacturing Technology

Since the introduction of a new production line for infra heater in 1985 HONGLING Oven has received high praise from the market for its excellent performance. Advanced technology and techniques ensure that the heating tubes have a lifespan of 10 years or more, making HONGLING Bakery Equipment the preferred choice



CNC Welding Machine (6x)



CNC Punching Machine (3x)



CNC Bending Machine (4x)



Rotary Rack Oven

HX-16

■ 16-Tray Rotary Oven

HX-32

■ 32-Tray Rotary Oven



Japan & France
Electronic Component



Olympia Burner
(Japan Brand)



Full Stainless Steel #201



Micro-Computer
Controller Optional

Pro

Model	Item	Voltage	Power	N.W. (KG)	Dimension(mm)
HX-16D-01	16-Tray Electric Rotary Oven	380V 50Hz 3N	38.7kW/h	1400	2325x1420x2440
HX-16Y-01	16-Tray Diesel Rotary Oven	380V 50Hz 3N	2.8kW/h	1400	2325x1420x2440
HX-16Q-01	16-Tray Gas Rotary Oven	380V 50Hz 3N	2.8kW/h	1400	2325x1420x2440
HX-32D-01	32-Tray Electric Rotary Oven	380V 50Hz 3N	50.7kW/h	1800	2605x1680x2440
HX-32Y-01	32-Tray Diesel Rotary Oven	380V 50Hz 3N	2.8kW/h	1800	2605x1680x2440
HX-32Q-01	32-Tray Gas Rotary Oven	380V 50Hz 3N	2.8kW/h	1800	2605x1680x2440

HX-64
■ 64-Tray Rotary Oven



★ ★ **Pro**

Model	Item	Voltage	Power	N.W. (KG)	Dimension(mm)
HX-64D-01	64-Tray Electric Rotary Oven	380V 50Hz 3N	76kW/h	2100	2800*2600*2500
HX-64Y-01	64-Tray Diesel Rotary Oven	380V 50Hz 3N	6.8kW/h	2100	2800*2600*2500
HX-64Q-01	64-Tray Gas Rotary Oven	380V 50Hz 3N	6.8kW/h	2100	2800*2600*2500

New Convection Oven



Quality Gasket



Full Stainless Steel



Durable Locker



Micro-computer Controller

Pro

Model	Item	Voltage	Power	N.W. (KG)	Dimension(mm)	Remark
RX-5D-NS	5-Tray Electric Convection Oven	380V 50Hz 3N	9.5kW/h	150	820x1080x850	With Steam function
RX-5Q-NS	5-Tray Gas Convection Oven	220V 50Hz	0.55kW/h	180	820x1080x850	With Steam function
RX-10D-NS	10-Tray Electric Convection Oven	380V 50Hz 3N	19kW/h	280	820x1080x1300	With Steam function
RX-10Q-NS	10-Tray Gas Convection Oven	220V 50Hz	1.1kW/h	310	820x1080x1300	With Steam function

RX-5Q (Gas) RX-5D (Electric)
■ 5-Tray Convection Oven



RX-10Q (Gas) RX-10D (Electric)
■ 10-Tray Convection Oven



8-Tray(400x600/460x720mm) are Optional



Durable Circulating Motor



Full Stainless Steel Body



With Steaming Function
and Adjustable Wind Gap & Hole



Double Buckle Locker

Pro

Model	Item	Voltage	Power	N.W.(KG)	Dimension(mm)	Remark
RX-5D	5-Tray Electric Convection Oven	380V 50Hz 3N	9.5kW/h	167	920x1420x860	With Steam function
RX-5Q	5-Tray Gas Convection Oven	220V 50Hz	0.55kW/h	190	920x1420x860	With Steam function
RX-10D	10-Tray Electric Convection Oven	380V 50Hz 3N	19kW/h	295	920x1420x1540	With Steam function
RX-10Q	10-Tray Gas Convection Oven	220V 50Hz	1.1kW/h	315	920x1420x1540	With Steam function

Luxury Gas Deck Oven

HQG-24F-NM

■ 2-Deck 4-Tray Luxury Gas Oven



HQG-36F-NM

■ 3-Deck 6-Tray Luxury Gas Oven



Elite

Model	Product Name	N.W. (KG)	Power	Size	Chamber size
HQG-24F-NM	2-Deck 4-Tray Luxury Gas Oven	275	0.8kW	1300×1600×2000	870×710×210
HQG-36F-NM	3-Deck 6-Tray Luxury Gas Oven	300	0.3kW	1300×1600×2000	870×710×210

HQG-39F-NM

■ 3-Deck 9-Tray Luxury Gas Oven

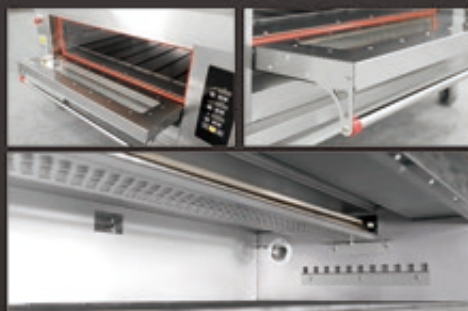


Elite

Model	Product Name	N.W. (KG)	Power	Size	Chamber size
HQG-39F-NM	3-Deck 9-Tray Luxury Gas Oven	300	0.3KW	1680×1610×2000	1250×710×210

Full Glass Door Gas Oven

- Stainless steel burner warranty 6 years
- Alusteel chamber side, better baking uniformity
- Micro computer controller with door seal
- Full glass window and fullstainless steel handle



HLY-102-NM

■ Gas 1-Deck 2-Tray



HLY-306-NM

■ Gas 3-Deck 6-Tray



HLY-204-NM

■ Gas 2-Deck 4-Tray



Pro

Model	Product Name	Voltage	Power	N.W.(KG)	Dimension(mm)	Tray Size(mm)	Chamber Size	Max. Temperature
HLY-102-NM	1-Deck 2-Tray Gas Oven	220V 50Hz	75W/h	106	1330x850x670	400x600	870x670x185mm	400°C
HLY-204-NM	2-Deck 4-Tray Gas Oven	220V 50Hz	150W/h	200	1330x850x1400	400x600	870x670x185mm	400°C
HLY-306-NM	3-Deck 6-Tray Gas Oven	220V 50Hz	225W/h	280	1330x850x1680	400x600	870x670x185mm	400°C
HLY-312-NM	3-Deck 12-Tray Gas Oven	220V 50Hz	225W/h	435	1860x1310x1910	400x600	1290x1000x185mm	400°C

HLY-101F

■ Gas 1-Deck 1-Tray



HLY-102F

■ Gas 1-Deck 2-Tray



HLY-204F

■ Gas 2-Deck 4-Tray



HLY-306F

■ Gas 3-Deck 6-Tray



Basic

Model	Product Name	Voltage	Power	N.W.(KG)	Dimension(mm)	Tray Size(mm)	Chamber Size	Max. Temperature
HLY-102F	1-Deck 2-Tray Gas Oven	220V 50Hz	75W/h	106	1310x850x670	400x600	870x670x185mm	400°C
HLY-204F	2-Deck 4-Tray Gas Oven	220V 50Hz	150W/h	200	1310x850x1400	400x600	870x670x185mm	400°C
HLY-306F	3-Deck 6-Tray Gas Oven	220V 50Hz	225W/h	280	1310x850x1680	400x600	870x670x185mm	400°C



HLY-104E
■ Gas 1-Deck 4-Tray



HLY-106E (4 Burner)
■ Gas 1-Deck 6-Tray



HLY-100E (4 Burner)
■ Gas 1000x1000mm Chamber



HLY-103F
■ Gas 1-Deck 3-Tray



HLY-206F
■ Gas 2-Deck 6-Tray



HLY-309F
■ Gas 3-Deck 9-Tray



★ **Basic**

Model	Product Name	Voltage	Power	N.W.(kg)	Dimension(mm)	Tray Size(mm)	Chamber Size	Max. Temperature
HLY-103F	1-Deck 3-Tray Gas Oven	220V 50Hz	75W/h	121	1815x926x580	400x600	1330x710x185mm	400°C
HLY-206F	2-Deck 6-Tray Gas Oven	220V 50Hz	150W/h	234	1815x926x1400	400x600	1330x710x185mm	400°C
HLY-309F	3-Deck 9-Tray Gas Oven	220V 50Hz	225W/h	380	1815x926x1705	400x600	1330x710x185mm	400°C
HLY-104E	1-Deck 4-Tray Gas Oven	220V 50Hz	75W/h	160	1770x1260x640	400x600	1290x1000x180mm	400°C
HLY-106E	1-Deck 6-Tray Gas Oven	220V 50Hz	150W/h	200	1770x1440x670	400x600	1290x1290x180mm	400°C
HLY-100E	40x40" (1000x1000mm) Chamber Gas Oven	220V 50Hz	150W/h	160	1485x1190x625	1000x1000	1000x1000x185mm	400°C

HQE-24F-NM

■ 2-Deck 4-Tray Luxury Electric Oven



HQE-36F-NM

■ 3-Deck 6-Tray Luxury Electric Oven



Elite

Model	Product Name	Voltage	Power	Size	Chamber size
HQE-24F-NM	2-Deck 4-Tray Luxury Electric Oven	380V 3N 50Hz	18.1kW	1240×1600×2000	870×710×210
HQE-36F-NM	3-Deck 6-Tray Luxury Electric Oven	380V 3N 50Hz	14.4kW	1240×1600×2000	870×710×210

HQE-39F-NM

■ 3-Deck 9-Tray Luxury Electric Oven

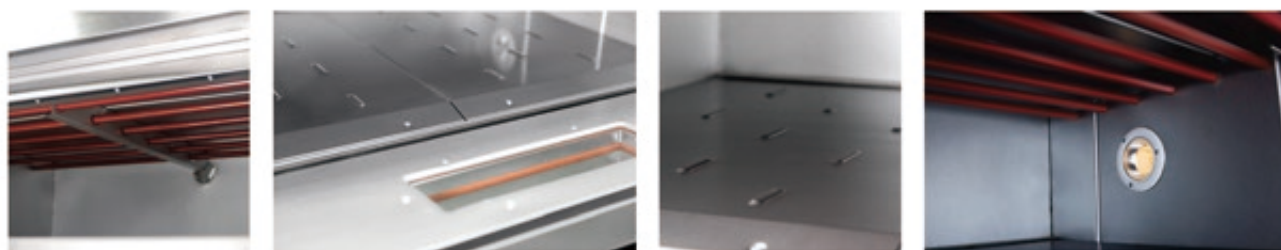


Elite

Model	Product Name	Voltage	Power	Size	Chamber size
HQE-39F-NM	3-Deck 9-Tray Luxury Electric Oven	380V 3N 50Hz	19.8kW	1620×1610×2000	1250×710×210

Common Type Electric Deck Oven

- 1 With more than 43 years oven manufacturing experience
- 2 High efficiency heater warranty 10 years
- 4 Alusteel chamber side, better baking uniformty



XYF-1KE-T
■ Electric 1-Deck 2-Tray



XYF-2KE-T
■ Electric 2-Deck 4-Tray



XYF-3KE-T
■ Electric 3-Deck 6-Tray



★ **Basic**

Model	Product Name	Voltage	Power	NW.(KG)	Dimension(mm)	Tray Size(mm)	Chamber Size	Max. Temperature
XYF-1KE-T	1-Deck 2-Tray Electric Oven	220V/380V 50Hz	6.8kW/h	78	1260x850x570	400x600	870x670x200mm	350°C
XYF-2KE-T	2-Deck 4-Tray Electric Oven	380V 50Hz	13.6kW/h	145	1260x850x1273	400x600	870x670x200mm	350°C
XYF-3KE-T	3-Deck 6-Tray Electric Oven	380V 50Hz	20.4kW/h	188	1260x850x1640	400x600	870x670x200mm	350°C

XYF-1EB-T

■ Electric 1-Deck 1-Tray



XYF-1ED

■ Electric 1-Deck 1-Tray



XYF-1ED-N

■ Electric 1-Deck 1-Tray



* Basic

Model	Product Name	Voltage	Power	N.W.(KG)	Dimension(mm)	Tray Size(mm)	Chamber Size	Max. Temperature
XYF-1EB-T	Electric 1-Deck 1-Tray Oven	220V 50Hz	3kW/h	30	930x685x405	400x600	645x510x155mm	350°C
XYF-1ED	Electric 1-Deck 1-Tray Oven	220V 50Hz	3kW/h	35	980x675x405	400x600	645x510x155mm	350°C
XYF-1ED-N	Electric 1-Deck 1-Tray Oven	220V 50Hz	3kW/h	35	980x675x405	400x600	645x510x155mm	350°C

XYF-1KAL-T

■ Electric 1-Deck 3-Tray



XYF-2KAL-T

■ Electric 2-Deck 6-Tray



XYF-3KAL-T

■ Electric 3-Deck 9-Tray



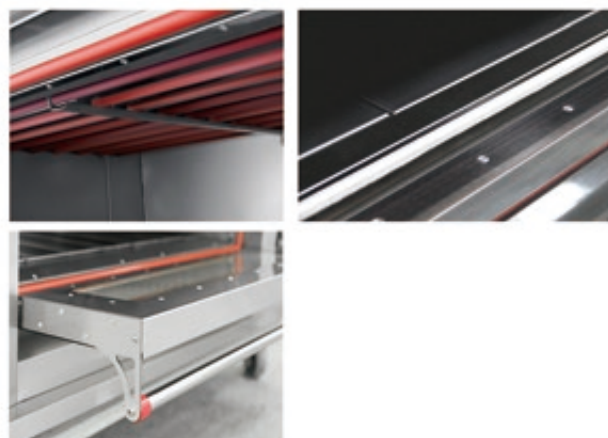
* Basic

Model	Product Name	Voltage	Power	N.W.(KG)	Dimension(mm)	Tray Size(mm)	Chamber Size	Max. Temperature
XYF-1KAL-T	Electric 1-Deck 3-Tray Oven	380V 50Hz	9kW/h	100	1680x860x570	400x600	1295x655x200mm	350°C
XYF-2KAL-T	Electric 2-Deck 6-Tray Oven	380V 50Hz	18kW/h	179	1680x860x1273	400x600	1295x655x200mm	350°C
XYF-3KAL-T	Electric 3-Deck 9-Tray Oven	380V 50Hz	27kW/h	260	1680x860x1660	400x600	1295x655x200mm	350°C



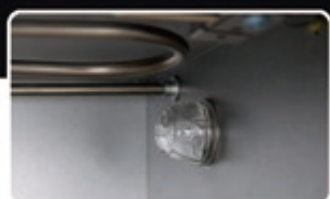
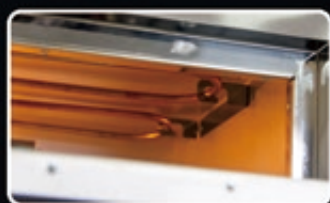
Full Glass Electric Oven

- 1 With more than 43 years oven manufacturing experiences
- 2 High efficiency heater warranty 10 years
- 3 With over-heat and leakage protected function
- 4 Micro computer controller with door seal
- 5 Full glass window and full stainless steel handle



Pro

Model	Product Name	Voltage	Power	N.W.(KG)	Dimension(mm)	Tray Size(mm)	Chamber Size	Temperature
XYF-1KA-NM	Electric 1-Deck 2-Tray Oven	220V / 380V 50Hz	6.8kW/h	78	1260x850x570	400x600	870x670x200mm	Rtp.~350°C
XYF-2KA-NM	Electric 2-Deck 4-Tray Oven	380V 50Hz	13.6kW/h	145	1260x850x1273	400x600	870x670x200mm	Rtp.~350°C
XYF-3KA-NM	Electric 3-Deck 6-Tray Oven	380V 50Hz	20.4kw/h	188	1260x850x1640	400x600	870x670x200mm	Rtp.~350°C



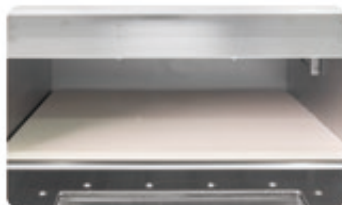
PZD-4040-01
Mini Pizza Oven (400x400)

PZD-4040-02
Mini Pizza Oven (400x400)



*** Basic**

Model	Product Name	Voltage	Power	N.W.(KG)	Dimension(mm)	Chamber Size(mm)	Max. Temp.
PZD-4040-01	Single Deck Pizza Oven	220V 50Hz	2.6kW	30	600x520x310	400x400x120	~350°C
PZD-4040-02	Double Deck Pizza Oven	220V 50Hz	3.9kW	56	600x520x470	400x400x120	~350°C
PZD-4040-01B	Full S.S Single Deck Pizza Oven	220V 50Hz	2.6kW	30	600x520x310	400x400x120	~350°C
PZD-4040-02B	Full S.S Double Deck Pizza Oven	220V 50Hz	3.9kW	56	600x520x470	400x400x120	~350°C



~450°C PZD-4040-01H
Mini Pizza Oven (400x400)



*** Pro**

Model	Product Name	Voltage	Power	N.W.(KG)	Dimension(mm)	Chamber Size(mm)	Max. Temp.
PZD-4040-01H	1-Deck-2-Tray Electric Pizza oven	220V 50Hz	2.6kW	-	650x550x330	400x400x120	~450°C
PZD-4040-02H	1-Deck-2-Tray Electric Pizza oven	220V 50Hz	5.2kW	-	650x600x560	400x400x120	~450°C

Luxury Pizza Oven



~400°C PZD-5269-1
■ Pizza Oven



~400°C PZD-5269-2
■ Pizza Oven



EGO Brand Controller



Full Stainless Steel



Stone Inside



Durable Heater & Controller

Elite

Model	Product Name	Voltage	Power	N.W.(KG)	Pizza Capacity	Dimension(mm)	Chamber Size(mm)
PZD-5269-1	Single Deck Pizza Oven (Electric)	380V3N~/50Hz	4.5kW	60	10"x4	800x965x415	520x690x145
PZD-5269-2	Double Deck Pizza Oven (Electric)	380V3N~/50Hz	9.0kW	100	10"x4x2	800x965x790	520x690x145

~500°C PZG-401A / PZE-401A
■ Gas Pizza Oven / Electric Pizza Oven



~500°C PZG-402A / PZE-402A
■ Gas Pizza Oven / Electric Pizza Oven



Pro (EGO Brand Controller)

Model	Product Name	Voltage	Power	Dimension(mm)	Pizza Capacity	Chamber Size	Max. Temperature
PZG-401A	Single Deck Pizza Oven (Gas)	220V 50Hz	0.1kW/h	1060x800x540	12" x4	600x600x150mm	320/500°C
PZG-402A	Double Deck Pizza Oven (Gas)	220V 50Hz	0.2kW/h	1060x800x950	12" x4 x2	600x600x150mm	320/500°C
PZE-401A	Single Deck Pizza Oven (Electric)	380V 50Hz	4.2kW/h	1060x800x540	12" x4	600x600x150mm	320/500°C
PZE-402A	Double Deck Pizza Oven (Electric)	380V 50Hz	8.4kW/h	1060x800x950	12" x4 x2	600x600x150mm	320/500°C

(13" x4 optional)

~500°C PZG-601 / PZE-601
■ Gas Pizza Oven / Electric Pizza Oven



~500°C PZG-602 / PZE-602
■ Gas Pizza Oven / Electric Pizza Oven



Pro

Model	Product Name	Voltage	Power	Dimension(mm)	Pizza Capacity	Chamber Size	Max. Temperature
PZG-601	Single Deck Pizza Oven (Gas)	220V 50Hz	0.1kW/h	1450x880x540	13" x6	1000x692x150mm	320/500°C
PZG-602	Double Deck Pizza Oven (Gas)	220V 50Hz	0.2kW/h	1450x880x1500	13" x6 x2	1000x692x150mm	320/500°C
PZE-601	Single Deck Pizza Oven (Electric)	380V 50Hz	6.6kW/h	1370x880x448	13" x6	1000x692x150mm	320/500°C
PZE-602	Double Deck Pizza Oven (Electric)	380V 50Hz	13.2kW/h	1370x880x1280	13" x6 x2	1000x692x150mm	320/500°C

Conveyor Pizza Oven



HLE-480

■ HLE-480 Electric Pizza Oven

HLG-480

■ HLG-480 Gas Pizza Oven

Elite Electric Pizza Oven

Model	Voltage	Power	Dimension(mm)	Conveyor size (mm)	Calorie (Kcal/h)	Baking Chamber Length (mm)	Chamber Size	Output pcs	N.W.
HLE-260	220V/380V 50/60Hz	5(KW)	788*690*412	788*260	3300	430	10 inches	36/hr (6" pizza)	56(KG)
HLE-400	220V/380V 50/60Hz	7(KW)	1230*866*429	1230*400	7300	460	15 inches	20/hr (9" pizza)	116(KG)
HLE-480	380V 50/60Hz	9.8(KW)	1247*972*438	1247*480	8800	560	18 inches	50/hr (9" pizza)	128(KG)
HLE-520	380V 50/60Hz	11.5(KW)	1520*1015*480	1520*520	10000	710	20 inches	70/hr (9" pizza)	144(KG)
HLE-865	380V 50/60Hz	24(KW)	1810*1522*600	1810*865	26000	940	34 inches	120/hr (9" pizza)	360(KG)

Elite Gas Pizza Oven

Model	Input Electricity	Gas Pressure (kpa)	Gas Consumption	Dimension(mm)	Conveyor size (mm)	Calorie (Kcal/h)	Baking Chamber Length (mm)	Chamber Size	Output pcs	N.W.
HLG-400	220V 50/60Hz	LPG 2.3-3.3 LNG 1.0-2.5	LPG 0.31(m ³ /hr) LNG 0.70(m ³ /hr)	1230*866*429	1230*400	7300	460	15 inches	20/hr (9" pizza)	116(KG)
HLG-480	220V 50/60Hz	LPG 2.3-3.3 LNG 1.0-2.5	LPG 0.38(m ³ /hr) LNG 0.88(m ³ /hr)	1247*972*438	1247*480	8800	560	18 inches	50/hr (9" pizza)	128(KG)
HLG-520	220V 50/60Hz	LPG 2.3-3.3 LNG 1.0-2.5	LPG 0.42(m ³ /hr) LNG 0.95(m ³ /hr)	1520*1015*480	1520*520	10000	710	20 inches	70/hr (9" pizza)	144(KG)
HLE-865	380V 50/60Hz	LPG 2.3-3.3 LNG 1.0-2.5	LPG 1.10(m ³ /hr) LNG 2.60(m ³ /hr)	1810*1522*600	1810*865	26000	940	34 inches	120/hr (9" pizza)	360(KG)



PZE-12/20

■ Electric Pizza Oven

PZG-12/20

■ Gas Pizza Oven



* Basic

Model	Product Name	Voltage	Power	GW.(KG)	Dimension(mm)	Belt Size(mm)	Temperature
PZE-12	12" Electric Pizza Oven	380V 50Hz 3N	6.4kW/h	45	1100x560x340	340x1100	Rtp.~400°C
PZE-20	20" Electric Pizza Oven	380V 50Hz 3N	18kW/h	65	1560x750x340	530x1560	Rtp.~400°C
PZG-12	12" Gas Pizza Oven	220V 50Hz	0.1kW/h	60	1100x640x430	340x1100	Rtp.~400°C
PZG-20	20" Gas Pizza Oven	220V 50Hz	0.1kW/h	80	1550x780x430	530x1550	Rtp.~400°C



XF-16A
■ 16 Trays Proofer



XF-32A
■ 32 Trays Proofer



With Auto water injection system



With timer control



With circulating fan



Humidity and Temp. Controller

Pro

Model	Item	Voltage	Power	N.W. (KG)	Machine Size(mm)
XF-16A	16 Trays Proofer	220V 50Hz	2.35kW	53	500x770x1980
XF-32A	32 Trays Proofer	220V 50Hz	3.2kW	102	1000x820x1980



XF-16B
 ■ Luxurious 16 Trays Proofer



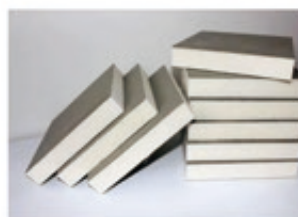
XF-32B
 ■ Luxurious 32 Trays Proofer



Adjustable Gap



With direct steam generating system
 (Without water tank inside)



With foaming insulation layer
 (Energy saving)



Micro-computer controller with timer

Elite

Model	Item	Voltage	Power	N.W. (KG)	Machine Size(mm)
XF-16B	Luxurious 16 Trays Proofer	220V 50Hz	2.35kW	63	500x770x1980
XF-32B	Luxurious 32 Trays Proofer	220V 50Hz	3.2kW	115	1020x700x1980



XF-16YH
■ 16-Tray Economy Proofer

XF-32YH
■ 32-Tray Economy Proofer



★ **Basic**

Model	Item	Voltage	Power	Machine Size(mm)
XF-13YH	Economy Type 13 Trays Proofer	220V 50Hz	2.6kW	500x700x1720
XF-16YH	Economy Type 16 Trays Proofer	220V 50Hz	2.6kW	500x700x1980
XF-32YH	Economy Type 32 Trays Proofer	220V 50Hz	2.8kW	1000x700x1980

Proofing Engine

XFZ-9 ■ Proofing Engine



Model	XFZ-9
Item	Proofing Engine
Voltage	380V 50Hz
Power	9.9kW
Weight	80KG
Machine Size	900*290*1680mm
Room Volume	3x3x2.3m
Temperature	25~50°C
Humidity	Max ~99%



XF-32H ■ 32 Trays Trolley Proofer



XF-64H ■ 64 Trays Trolley Proofer



Model	Item	Voltage	Power	N.W. (KG)	Machine Size(mm)
XF-32H	32 Tray Single Trolley Proofer	380V 50Hz	2.8kW	350	850x1240x2140
XF-64H	64 Tray Two Trolley Proofer	380V 50Hz	5.6kW	450	1720x1240x2140

Spiral Mixer



BS-10A
■ Spiral Mixer

BS-20A/20H
BS-30A/30H
■ SPIRAL MIXER (Converter Inside)

BS-40A/40H
■ SPIRAL MIXER (Converter Inside)

BS-60A/60H
■ SPIRAL MIXER (Converter Inside)



* Basic

Model	Item	Voltage/Power	Flour Capacity	N.W.	Dimension(mm)	Hook Speed	Bow Speed	Bowl Capacity
BS-10A	10L Spiral Mixer (3.5kg Converter inside)	220V 50Hz/0.55kW	3.5kg	43kg	480x250x500	110-285rpm	12-25rpm	10L
BS-20A	20L Spiral Mixer (8kg Converter inside)	220V 50Hz/1.5kW	8kg	93kg	700x390x770	125/250rpm	12/25rpm	20L
BS-30A	30L Spiral Mixer (12kg Converter inside)	220V 50Hz/2.0kW	12kg	117kg	770x440x850	125/250rpm	12/25rpm	30L
BS-40A	40L Spiral Mixer (15kg Converter inside)	220V 50Hz/2.2kW	15kg	125kg	770x440x850	125/250rpm	12/25rpm	40L
BS-50A	50L Spiral Mixer (20kg Converter inside)	220V 50Hz/4.0kW	20kg	160kg	880x500x920	125/250rpm	12/25rpm	50L
BS-60A	60L Spiral Mixer (25kg Converter inside)	220V 50Hz/4.0kW	25kg	177kg	880x530x920	125/250rpm	12/25rpm	60L
BS-20H	20L Spiral Mixer (8kg)	380V 50Hz/1.1kW	8kg	93kg	700x390x770	125/250rpm	12/25rpm	20L
BS-30H	30L Spiral Mixer (12kg)	380V 50Hz/1.5kW	12kg	117kg	770x440x850	125/250rpm	12/25rpm	30L
BS-40H	40L Spiral Mixer (15kg)	380V 50Hz/1.8kW	15kg	125kg	770x440x850	125/250rpm	12/25rpm	40L
BS-50H	40L Spiral Mixer (20kg)	380V 50Hz/4.0kW	20kg	160kg	880x500x920	125/250rpm	12/25rpm	50L
BS-60H	60L Spiral Mixer (25kg)	380V 50Hz/4.0kW	25kg	177kg	880x530x920	125/250rpm	12/25rpm	60L



Fast and Slow Speed Timer



Well Finishing Body



Powerful Belt Transmission

+ Basic

Model	Product Name	Voltage	Power	Flour Capacity	N.W. (KG)	Dimension(mm)	Hook Speed	Bowl Capacity
DM-8G	8L Spiral Mixer (3kg)	220V 50Hz	0.7kW	3kg	30kg	495x302x385	0~159rpm	8L
DM-20GT	20L Spiral Mixer (8kg)	220V 50Hz	1.1kW	8kg	92kg	675x400x825	125/250rpm	20L
DM-30GT	30L Spiral Mixer (12kg)	220V 50Hz	1.5kW	12kg	103kg	730x445x860	120/250rpm	30L
DM-40H	40L Spiral Mixer (16kg)	380V 50Hz	2.2kW	16kg	133kg	754x490x1055	125/250rpm	40L
DM-50H	50L Spiral Mixer (20kg)	380V 50Hz	2.4kw	20kg	182kg	794x520x1055	138/285rpm	50L
DM-60H	60L Spiral Mixer (25kg)	380V 50Hz	2.4kw	25kg	195kg	876x526x1120	138/285rpm	60L
DM-80H	70L Spiral Mixer (30kg)	380V 50Hz	2.4kw	30kg	220kg	920x580x1120	138/285rpm	70L

HS 80 (25KG)
■ 80L Spiral Mixer



HS130 (50KG)
■ 130L Spiral Mixer



HS200/260 (75/100KG)
■ 200/260L Spiral Mixer



Pro

Model	Product Name	Voltage	Power	Flour Capacity	N.W. (KG)	Dimension(mm)	Hook Speed	Bowl Capacity
HS80	80L Spiral Mixer (25kg)	380V 50Hz	2.4kW	25kg	429kg	1120x680x1300	107/210rpm	80L
HS130	130L Spiral Mixer (50kg)	380V 50Hz	5.6kW	50kg	570kg	1220x750x1430	107/210rpm	130L
HS200	200L Spiral Mixer (75kg)	380V 50Hz	7.5kW	75kg	700kg	1330x950x1510	100/200rpm	200L
HS260	260L Spiral Mixer (100kg)	380V 50Hz	11kW	100kg	750kg	1460x950x1600	100/200rpm	260L



With Emergency Operation Button Manual or Digital Controller are Optional



Omron Timer and High Quality Parts



Food Grade Stainless Steel



DM-15E
■ Spiral mixer

DM-25E
■ Spiral mixer

DM-50EH
■ Spiral mixer

Elite

Model	Product Name	Voltage	Power	Flour Capacity	N.W.	Dimension(mm)	Hook Speed	Bowl Capacity
DM-15E	40L Spiral Mixer (15kg)	380V 50Hz	2.2kW	15kg	200kg	860x485x1230	271/124rpm	40L
DM-25E	80L Spiral Mixer (25kg)	380V 50Hz	4.0kW	25kg	300kg	930x590x1280	255/117rpm	80L
DM-50E	130L Spiral Mixer (50kg)	380V 50Hz	6.0kW	50kg	410kg	1140x715x1370	238/109rpm	130L
DM-50EH	130L Spiral Mixer (50kg)	380V 50Hz	6.0kW	50kg	680kg	1400x1380x1510	260/120rpm	130L

TB7L-200Y
■ 7L Food Mixer



TB7L-200YB
■ 7L Food Mixer



Basic

Model	Product Name	Voltage	Power	N.W. (KG)	Dimension(mm)	Bowl Capacity
TB7L-200Y	7L Food Mixer	220V 50Hz	320W/h	12.5kg	320x480x540	7L
TB7L-200YB	7L Food Mixer	220V 50Hz	320W/h	12.5kg	320x480x540	7L



B-5/B-7
■ 5L/7L Food Mixer



Pro

Model	Product Name	Voltage	Power	Flour Capacity	N.W. (KG)	Dimension(mm)	Bowl Capacity
B-5	5L Food Mixer	220V 50Hz	300W/h	1.0kg	13.6kg	370x230x410	5L
B-7	7L Food Mixer	220V 50Hz	350W/h	1.5kg	14.5kg	420x250x425	7L



HL-5C/7C
■ 5L/7L Food Mixer



Elite With CE ETL & UL Certification

Model	Product Name	Voltage	Power	Flour Capacity	N.W. (KG)	Dimension(mm)	Bowl Capacity
HL-5C	5L Food Mixer	220V 50Hz	250W/h	1.0kg	14kg	410x230x420	5L
HL-7C	7L Food Mixer	220V 50Hz	270W/h	1.5kg	15kg	410x230x420	7L

Planetary Mixer



B-10B

■ 10L Planetary Mixer (Gear)



B-20B

■ 20L Planetary Mixer (Gear)



B-30B

■ 30L Planetary Mixer (Gear)



★ Basic

Model	Product Name	Voltage	Flour Capacity	N.W.	Dimension(mm)	Mixing Speed	Bowl Capacity
B-10B	10L Planetary mixer(Gear)	220V 50Hz	1kg	56kg	450*350*640	110/180/408rpm	10L
B-20B	20L Planetary mixer(Gear)	220V 50Hz	2kg	73kg	580*440*770	110/180/408rpm	20L
B-30B	30L Planetary mixer(Gear)	220V 50Hz	3kg	90kg	560*600*820	110/180/408rpm	30L

B-20F

■ 20L Planetary mixer (Belt)



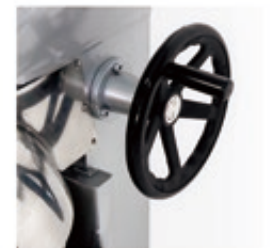
B-30F

■ 30L Planetary mixer (Belt)



B-40F/50F/60F

■ 40L/50L/60L Planetary mixer (Belt)



+ Basic

Model	Product Name	Voltage	Flour Capacity	N.W.	Dimension(mm)	Mixing Speed	Bowl Capacity
B-20F	20L Planetary mixer (Belt)	220V 50Hz	3.0KG	80KG	540x450x860	110/200/420rpm	20L
B-30F	30L Planetary mixer (Belt)	220V 50Hz	4.0KG	109KG	545x488x925	110/200/420rpm	30L
B-40F	40L Planetary mixer (Belt)	220/380V 50Hz	4.5KG	150KG	620x520x1011	80/160/310rpm	40L
B-50F	50L Planetary mixer (Belt)	380V 50Hz	7.0KG	195KG	690x622x1200	74/150/288rpm	50L
B-60F	60L Planetary mixer (Belt)	380V 50Hz	8.0KG	251KG	724x652x1300	74/150/288rpm	60L

Planetary Mixer



- 1 With CE ETL & UL certification
- 2 All stainless steel is food grade #304
- 3 The body is made of cast aluminum
- 4 Good finishing inside and outside

Elite

Model	Product Name	Voltage	Power	Flour Capacity	N.W.	Dimension(mm)	Hook Speed	Bowl Capacity
LB-10A	10L Luxury Planetary Mixer	220V 50Hz	0.75kW	2.0kg	36kg	505x475x710	108/198/355rpm	10L
LB-20A	20L Luxury Planetary Mixer	220V 50Hz	1.1kW	4.0kg	112kg	630x590x890	108/198/355rpm	20L
LB-30A	30L Luxury Planetary Mixer	220V 50Hz	1.5kW	7.5kg	180kg	710x670x1270	108/198/355rpm	30L
LB-40A	40L Luxury Planetary Mixer	220V 50Hz	2.2kW	9.5kg	190kg	710x670x1300	108/198/355rpm	40L
LB-60A	60L Luxury Planetary Mixer	380V 50Hz	3.0kW	15kg	396kg	1220x920x1700	71/123/206/362rpm	60L

N-101

■ 10L Planetary Mixer



N-201

■ 20L Planetary Mixer



N-301/N-401

■ 30/40L Planetary Mixer



★ Pro

Model	Product Name	Voltage	Power	N.W.	Dimension(mm)	Mixing speed	Bowl Capacity
N-101	10L Planetary Mixer	220V 50Hz	0.23kW	57KG	430x440x670	156/340/530 rpm	10L
N-201	20L Planetary Mixer	220V 50Hz	0.38kW	84KG	500x600x950	131/288/518 rpm	20L
N-301	30L Planetary Mixer	220V 50Hz	0.75kW	151KG	620x620x102	120/240/468 rpm	30L
N-401	40L Planetary Mixer	220V 50Hz	1.13kW	163KG	620x610x1070	120/240/468rpm	40L

B-60A/80A

■ 60/80L Planetary Mixer



B-80E/100E

■ 80/100L Planetary Mixer

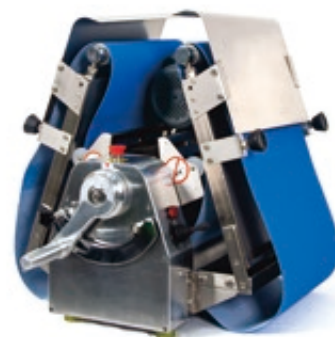


★ Pro

Model	Product Name	Voltage	N.W. (kg)	Dimension(mm)	Mixing Speed	Bowl Capacity
B-60A	60L Planetary Mixer	380V 50Hz	480kg	920x670x1630	110/200/420rpm	60L
B-80A	80L Planetary Mixer	380V 50Hz	510kg	940x720x1730	110/200/420rpm	80L
B-80E	80L Planetary Mixer	380V 50Hz	480kg	1250x800x1750	80/160/310rpm	80L
B-100E	100L Planetary Mixer	380V 50Hz	580kg	1300x840x1750	74/150/288rpm	100L



QS-400BT/520BT
■ Full S.S 400/520mm Table Top

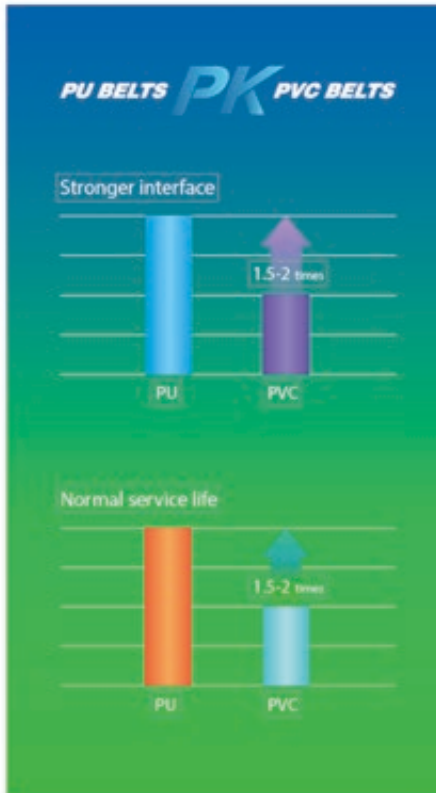
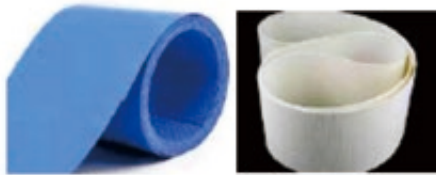


QS-520BE/630BE
■ Luxurious 520/630mm Sheeter



QS-400B/520B/630B
■ 400/520/630mm Classic type





What's PU (Blue) belt?

- ① Higher food safety level with FDA SGS certified.
- ② 1.5-2 times longer service life than PVC belt.
- ③ PU belt materials are oil-resistant.
- ④ PU belts are more easy to clean and will not be yellowing.

Elite

Model	Product Name	Belt Size	Voltage	Net Weight	Expanded Width/ Height	Max DoughCapacity	Machine Size
QS-520BE	Luxurious 520 Dough Sheeter	520x2200	220/380V 50Hz	260kg	2700x1100	5.5kg	960x2700x1100
QS-630BE	Luxurious 630 Dough Sheeter	630x2400	220/380V 50Hz	290kg	3100x1100	6.5kg	1060x3100x1100
QS-400B	Full S.S 400 Dough Sheeter	400x1600	220/380V 50Hz	170kg	2000x1040	4.0kg	820x2000x1040
QS-520B	Full S.S 520 Dough Sheeter	520x2200	220/380V 50Hz	248kg	2700x1100	5.5kg	960x2700x1100
QS-630B	Full S.S 630 Dough Sheeter	630x2400	220/380V 50Hz	268kg	3100x1100	6.5kg	1060x3100x1100
QS-400BT	Full S.S Table Top 400 Dough Sheeter	400x1600	220/380V 50Hz	110kg	1990x590	4.0kg	840x1990x590
QS-520BT	Full S.S Table Top 520 Dough Sheeter	520x2200	220/380V 50Hz	130kg	2250x590	5.5kg	960x2250x590

MT 300/400/500

■ 300/400/500 dough sheeter



Model	Voltage	Frequency	Motor power	Roller Range	Roller Diameter	Worktable Width	N.W.(kg)	Outline Dimension
MT300	220(V)	50/60(Hz)	0.12(Kw)	1~35(mm)	89mm	300(mm)	80	68*118*55cm
MT400	220(V)	50/60(Hz)	0.12(Kw)	1~35(mm)	89mm	400(mm)	90	78*168*55cm
MT500	220(V)	50/60(Hz)	0.12(Kw)	1~35(mm)	89mm	500(mm)	100	88*208*55cm

H-520E/630E

■ 520/630 dough sheeter



H-400T/500T

■ 400/520 dough sheeter



Basic

Model	Product Name	Belt Size	Voltage	Net Weight	Expanded Width/ Height	Max Dough Capacity
H-420E	420 Dough Sheeter (Floor Type)	400x1700	220/380V 50Hz	250kg	2020x1285	4.0kg
H-520E	520 Dough Sheeter (Floor Type)	500x2000	220/380V 50Hz	260kg	2520x1282	5.0kg
H-630E	630 Dough Sheeter (Floor Type)	610x2800	220/380V 50Hz	290kg	3320x1285	6.5kg
H-400T	400 Dough Sheeter (Table Top)	400x1700	220/380V 50Hz	130kg	2020x700	4.0kg
H-500T	500 Dough Sheeter (Table Top)	500x2000	220/380V 50Hz	150kg	2430x700	5.0kg

QS-650Z
■ Automatic Dough Sheeter



DM-300
■ Toast Dough moulder

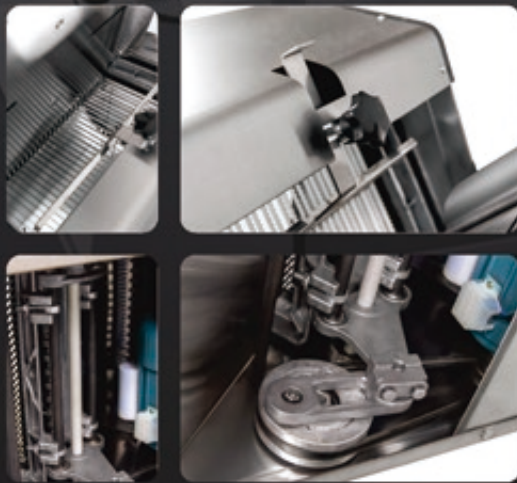


QS-600AC
■ Auto.Shape Cutting Machine



Cutting Shape: ○ □ ▲ ▽ ▭ ○

Model	Product Name	Belt Size	Voltage	Net Weight	Power	Machine Size
QS-600AC	Auto. Shape Cutting Machine	600x4000	220/380V 50Hz	600kg	1.2kW	4000x1000x1140
QS-650Z	Auto. 650 Dough Sheeter	630x4000	220/380V 50Hz	600kg	1.5kW	4000x1090x1360
DM-300	Toast Dough Moulder	Belt wide:650mm	220/380V 50Hz	280kg	1.1kW	2100x900x1720



HLM-31B
■ 12mm Full S.S body



★ Basic

Model	Slicing Thickness	Blade Quantity	Voltage	Power	Net Weight	Machine Size
HLM-31B	12mm Full S.S Bread Slicer	31 pcs	220V 50Hz	0.37kW	50kg	720x546x720
HLM-31P	12mm Bread Slicer	31 pcs	220V 50Hz	0.37kW	50kg	720x546x720

HLM-31H
■ 12/10/9mm



★★ Pro

Model	Slicing Thickness	Blade Quantity	Voltage	Power	Net Weight	Machine Size
HLM-31H	12mm	31 pcs	220V 50Hz	0.37kW	70kg	720x546x720
HLM-37H	10mm	37 pcs	220V 50Hz	0.37kW	70kg	720x546x720
HLM-25H	15mm	25 pcs	220V 50Hz	0.37kW	70kg	720x546x720
HLM-18H	20mm	18 pcs	220V 50Hz	0.37kW	70kg	720x546x720



AUR-1P/2P/3P/4P
 ■ Automatic Dough Divider and Rounder

Model	Dough Range	Output Capacity	Voltage	Power	Net Weight	Machine Size
AUR-1P	100-500g	1800pcs/h	380V 50Hz	1.5kW	420kg	880x1200x1500
AUR-2P	25-250g	3600pcs/h	380V 50Hz	1.5kW	420kg	880x1200x1500
AUR-3P	20-100g	5400pcs/h	380V 50Hz	1.5kW	420kg	880x1200x1500
AUR-4P	15-80g	8000pcs/h	380V 50Hz	1.5kW	420kg	880x1200x1500

QQJ-400
 ■ Cookie Depositor



QQJ-600
 ■ Cookie Depositor



Model	Belt Width	Output Capacity	Voltage	Power	Net Weight	Machine Size
QQJ-400	420mm	80~130kg/h	220V 50Hz	1.2kW	350kg	930x1550x1410
QQJ-600	620mm	120~190 kg/h	220V 50Hz	1.2kW	450kg	1130x1550x1410

HLM-36

■ 36 Cuts Dough Divider



HLM-36BP/20BP

■ 36/20 Cuts Manual Dough Divider



Model	Product Name	Blade Quantity	Dough Range	Power	Net Weight	Machine Size
HLM-36	36 Cuts Dough Divider	36 pcs	30-180g	220V 50Hz 0.75kw	180kg	410x520x1240
HLM-36BP	36 Cuts Manual Dough Divider	36 pcs	30-180g	----	80kg	520x600x1280
HLM-20BP	20 Cuts Manual Dough Divider	20 pcs	50-250g	----	80kg	520x600x1280

HLM-H20D/H30D

■ 20/30 Cuts Hydraulic Dough Divider



FB-300

■ Baguette Moulder



Model	Product Name	Divider Quantity	Dough Range	Voltage	Power	N.W.	Machine Size
HLM-H20D	20 Cuts Hydraulic Dough Divider	20 pcs	135-800g	220V/380V,50Hz	2.2kW	400kg	640x660x985
HLM-H30D	30 Cuts Hydraulic Dough Divider	30 pcs	90-550g	220V/380V,50Hz	2.2kW	400kg	640x660x985
FB-300	Baguette Moulder	----	----	220V/380V,50Hz	1.1kW	400kg	960x1010x1580



MD-380A
■ 380mm Toast Moulder



MD-280A
■ 280mm Mini Toast Moulder

Model	Product Name	Voltage	Power	Net Weight	Machine Size
MD-380A	380mm Toast Moulder	220V / 380V	0.75kW	220kg	580x1340x1100
MD-280A	280mm Mini Toast Moulder	220V / 380V	0.40kW	145kg	720x546x720

HLM-30S/36S

■ 30/36 Cuts Semi-Auto Dough Divider and Rounder



HLM-30FA/36FA

■ 30/36 Cuts Full Auto Dough Divider and Rounder



Model	Product Name	Dough Range	Voltage	Power	N.W.(KG)	Machine Size
HLM-30S	30 Cuts Semi Auto Dough Divider and Rounder	30-100g	220/380V 50Hz	0.75KW	330kg	740x570x2100
HLM-36S	36 Cuts Semi Auto Dough Divider and Rounder	20-70g	220/380V 50Hz	0.75KW	330kg	740x570x2100
HLM-30FA	30 Cuts Full Auto Dough Divider and Rounder	30-100g	220/380V 50Hz	1.5KW	400kg	540x580x1500
HLM-36FA	36 Cuts Full Auto Dough Divider and Rounder	20-70g	220/380V 50Hz	1.5KW	400kg	540x580x1500

Pizza Dough Roller

APD40
■ 15 Inch Pizza Roller



APD30
■ 12 Inch Pizza Roller



Model	Product Name	Pizza Size	Dough Range	Voltage	Net Weight	Machine Size
APD40	15 Inch Pizza Roller	10-40mm	50-500g	220V 50/60Hz 0.37kw	40kg	530x530x645
APD30	12 Inch Pizza Roller	10-30mm	50-500g	220V 50/60Hz 0.37kw	37kg	480x520x620

H-18VA
■ 18 Inch Pizza Roller



Model	Product Name	Machine Size	Net Weight	Voltage	Dough Range	Pizza Size
H-18VA	18 Inch Pizza Dough Roller	645*380*350mm	27kg	220V 50/60Hz 0.45kw	50-500g	10-480mm

GP-G60X/G80X
 ■ Gas 6/8-Tray Rice Steamer



GP-G100X/G120X
 ■ Gas 10/12-Tray Rice Steamer



GP-G240
 ■ Gas 24-Tray Rice Steamer



GP-E60X/E80X
 ■ Electric 6/8-Tray Rice Steamer



GP-E100X/E120X
 ■ Electric 10/12-Tray Rice Steamer



GP-E240X
 ■ Electric 24-Tray Rice Steamer



GAS Rice Steamer

Model	Machine Size
GP-G60X	700x580x1140
GP-G80X	700x580x1280
GP-G100X	700x580x1430
GP-G120X	700x580x1560
GP-G240X	1380x580x1560

Electric Rice Steamer

Model	Machine Size
GP-E60X	700x580x1140
GP-E80X	700x580x1280
GP-E100X	700x580x1430
GP-E120X	700x580x1560
GP-E240X	1380x580x1560

Pressure Fryer



HPFE-24/HPFG-25
■ Electric/Gas Pressure Fryer



HPFG-800/HPFE-800
■ Gas/Electric Pressure Fryer



Model	Product Name	Voltage	Power	E.X. Size(cm)	Capacity
HPFG-800	Gas Pressure Fryer	220-230V 50Hz	160W	96*46*123	25L
HPFG-25	Gas Pressure Fryer	220-230V 50Hz	160W	96*46*123	25L
HPFE-800	Electric Pressure Fryer	220-380V 50Hz	13.5kW	96*46*123	25L
HPFE-24	Electric Pressure Fryer	220-380V 50Hz	13.5kW	96*46*123	24L

Cream Machine



16M-18
■ Cake Cream Machine



12M-18
■ Cake Cream Machine



12M-12
■ Cake Cream Machine



Model	Product Name	Voltage	Power	N.W.	Dimension
CKM-12M-12	Cake Cream Machine	220V 50Hz	80W	26kg	510*350*480
CMK-12M-18	Cake Cream Machine	220V 50Hz	60W	28kg	550*410*580
CKM-16M-18	Cake Cream Machine	220V 50Hz	60W	28kg	650*500*560



Model	Size	Thickness	Material
TB-106080	1000x600x800mm	1.0mm	Stainless steel #201
TB-127080	1200x700x800mm	1.0mm	Stainless steel #201
TB-157080	1500x700x800mm	1.0mm	Stainless steel #201
TB-187080	1800x700x800mm	1.0mm	Stainless steel #201
TB-128080	1200x800x800mm	1.0mm	Stainless steel #201
TB-158080	1500x800x800mm	1.0mm	Stainless steel #201
TB-188080	1800x800x800mm	1.0mm	Stainless steel #201



Model	Size	Thickness	Material
TBB-106080	1000x600x800mm	1.0mm	Stainless steel #201
TBB-127080	1200x700x800mm	1.0mm	Stainless steel #201
TBB-157080	1500x700x800mm	1.0mm	Stainless steel #201
TBB-187080	1800x700x800mm	1.0mm	Stainless steel #201
TBB-128080	1200x800x800mm	1.0mm	Stainless steel #201
TBB-158080	1500x800x800mm	1.0mm	Stainless steel #201
TBB-188080	1800x800x800mm	1.0mm	Stainless steel #201



Model	Size	Material
SR-155015	1500x500x1550mm	Stainless steel #201
SR-125015	1200x500x1550mm	Stainless steel #201
SR-105015	1000x500x1550mm	Stainless steel #201



16 Trays Trolley
(Normal temperature)



32 Trays Trolley
(Normal temperature)



16 Trays Trolley
(High Temperature Resistance)

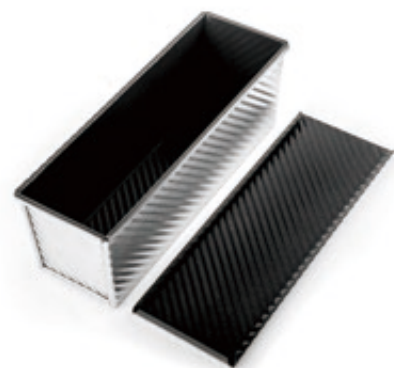


32 Trays Trolley
(High Temperature Resistance)



Perforated Loaf Pan (Aluminum, Two-sides Non-stick)

Model	Dimonsion	Size			Thickness
		Top Size	Bottom Size	Height	
XMC70010	450g	197x106 mm	186x101 mm	110 mm	1.0 mm
XMC70011	600g	309x91 mm	300x84 mm	107 mm	1.0 mm
XMC70012	750g	316x100 mm	305x93 mm	116 mm	1.0 mm
XMC70013	900g	327x106 mm	316x100 mm	122 mm	1.0 mm
XMC70014	1000g	327x121 mm	312x119 mm	121 mm	1.0 mm
XMC70015	1200g	370x120 mm	361x116 mm	125 mm	1.0 mm



Corrugated Loaf Pan (Aluminum, Non-stick)

Model	Dimonsion	Size			Thickness
		Top Size	Bottom Size	Height	
XMC40019	250g	164x94 mm	158x87 mm	77 mm	1.0 mm
XMC40020	385g	217x94 mm	211x88 mm	77 mm	1.0 mm
XMC40021	450g	197x106 mm	186x101 mm	110 mm	1.0 mm
XMC40022	600g	309x91 mm	300x84 mm	107 mm	1.0 mm
XMC40023	750g	316x100 mm	305x93 mm	116 mm	1.0 mm
XMC40024	900g	327x106 mm	316x100 mm	122 mm	1.0 mm
XMC40025	1000g	327x121 mm	312x119 mm	121 mm	1.0 mm
XMC40026	1200g	370x120 mm	361x116 mm	125 mm	1.0 mm



Loaf Pan (Aluminum, Non-stick)

Model	Dimonsion	Size			Thickness
		Top Size	Bottom Size	Height	
XMC20010	250g	164x94 mm	158x87 mm	77 mm	1.0 mm
XMC20011	385g	217x94 mm	211x88 mm	77 mm	1.0 mm
XMC20012	450g	197x106 mm	186x101 mm	110 mm	1.0 mm
XMC20013	600g	309x91 mm	300x84 mm	107 mm	1.0 mm
XMC20014	750g	316x100 mm	305x93 mm	116 mm	1.0 mm
XMC20015	900g	327x106 mm	316x100 mm	122 mm	1.0 mm
XMC20016	1000g	327x121 mm	312x119 mm	121 mm	1.0 mm
XMC20017	1200g	370x120 mm	361x116 mm	125 mm	1.0 mm



Baking Tray



Low Side Aluminum Tray

Model	Size	Thickness	(Actual)
LT-4060-1.0	400x600x30mm	1.0mm	(0.6mm)
LT-4060-0.8	400x600x30mm	0.8mm	(0.45mm)



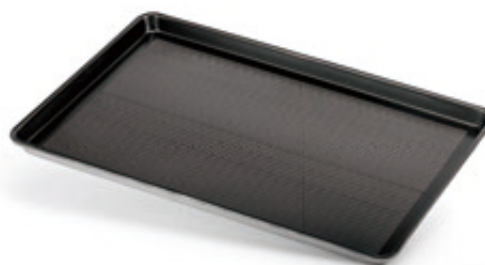
High Side Aluminum Tray

Model	Size	Thickness	(Actual)
HT-4060-1.0	400x600x50mm	1.0mm	(0.6mm)
HT-4060-0.8	400x600x50mm	0.8mm	(0.45mm)



Alusteel Tray

Model	Size	Thickness
ALT-4060-0.6	400x600x30mm	0.6mm
ALT-4060-0.7	400x600x30mm	0.7mm



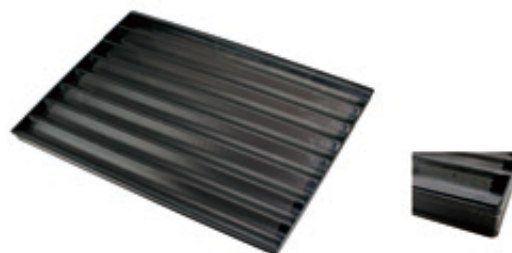
Non-stick Perforated Austeel Baking Tray

Model	Size	Thickness
PLT-4060-0.6	400x600x30mm	0.6mm
PLT-4060-0.7	400x600x30mm	0.7mm



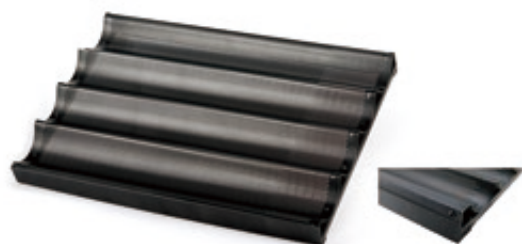
Non-stick Austeel Baking Tray

Model	Size	Thickness
NLT-4060-0.6	400x600x30mm	0.6mm
NLT-4060-0.7	400x600x30mm	0.7mm



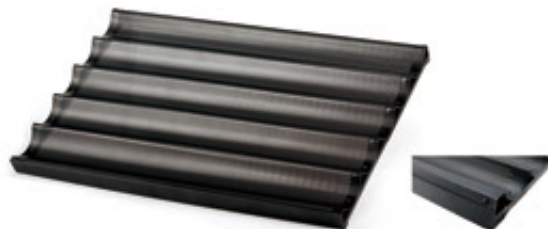
Non-stick 8 Rows Baguette Tray (Aluminum)

Model	Size	Thickness	Row Size
NBT-6080-8	600x800x43mm	1.0mm	65x26mm



Non-stick 4 Rows Baguette Tray (Aluminum)

Model	Size	Thickness	Row Size
NBT-4060-4	400x600x43mm	1.0mm	88x24mm



Non-stick 8 Rows Baguette Tray (Aluminum)

Model	Size	Thickness	Row Size
NBT-4060-5	400x600x43mm	1.0mm	66x30mm

Blender

TM-767 (2L)
■ 2L Blender



Q8 (4L)
■ 4L Blender



1108A (2.2L)
■ 2.2L Blender



K31 (2.2L)
■ 2.2L Blender



K90 (2.2L)
■ 2.2L Blender



K95 (2.2L)
■ 2.2L Blender



Model	Product Name	Voltage	Power	Capacity	N.W. (KG)	Dimension(mm)
TM-767	Blender	220V 50Hz	1.5KW	2.0L	3.65	180*220*500
Q8	Blender	220V 50Hz	2.2kW	4.0L	5.18	220*230*570
1108A	Blender	220V 50Hz	2000W	2.2L	6	215*215*490
K31	Blender	220V 50Hz	2000W	2.2L	6.64	240*230*500
K90	Blender	220V 50Hz	2000W	2.2L	6.3	240*230*500
K95	Blender	220V 50Hz	2000W	2.0L	4.1	180*180*500

Convection Oven

HECO-1A
■ Tray Convection Oven



HECO-4A
■ Tray Convection Oven



Model	Item	Voltage	Power	NW(KG)	Chamber size(mm)	Temperature Range	Steam Function	Baking tray size
HECO-1A	Convection Oven	220-240V 50Hz	2.5KW	40	460x373x358	Rt-300°C	No	320*440 mm
HECO-4A	Convection Oven	220-240V 50Hz	2.67KW	40	460x373x358	Rt-300°C	Yes	320*440 mm

HL112 (12L)
12L Slush machine



HL212 (12L*2)
12L*2 Slush machine



HL312 (12L*3)
12L*3 Slush machine



Slush machine

Model	Voltage	Power	Capacity	N.W.	Dimension(mm)
HL112	220V 50Hz	570W	12L*1	30kg	260*550*790mm
HL212	220V 50Hz	900W	12L*2	42kg	400*550*790mm
HL312	220V 50Hz	1100W	12L*3	57kg	600*550*790mm

Ice cream machine



Model	Product Name	Voltage	Power	Capacity	N.W.	Dimension(mm)
HL626T	Ice cream machine	220V 50Hz	2000W	25-28L/H	85kg	590*535*790
HL626	Ice cream machine	220V 50Hz	2000W	25-28L/H	100kg	590*535*1305

Ice Maker

BY-350
Split Type Ice Making Machine

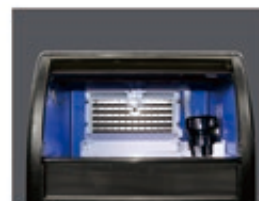


Model	Product Name	Voltage	Power	Ice out turn	Fund ice	Dimension(cm)
BY-120	One-Piece Ice Machine	220V 50Hz 10A	495W	60kg	25kg	530*590*860
BY-200	One-Piece Ice Machine	220V 50Hz 10A	630W	90kg	50kg	680*690*950
BY-350	Split Type Ice Making Machine	220V 50Hz 10A	810W	150kg	100kg	580*820*1560

BY-200
One-Piece Ice Machine



BY-120
One-Piece Ice Machine



Bone Saw Machine



Model	J120	J280C	J210A
Item	Bone Saw	Bone Saw	Bone Saw
Voltage	220V 50Hz	220V 50Hz	220V 50Hz
Power	0.65kW	1.5kW	1.1kW
N.W.	34kg	40kg	53kg
Dimension(mm)	430*530*820	520*520*100	670*550*1050
Band Saw's Speed	15m/s	15m/s	15m/s
Wheel Diameter	130mm	210mm	210mm

Meat Mincer



Model	Product Name	Power	Voltage	Size(mm)	N.W.	Capacity	Speed
MC-12	Meat Mincer	220V	0.75kW	370*220*420	16.5kg	120kg/h	170RPM
MC-12S	Full S.S Meat Mincer	220V	0.75kW	370*220*420	16.5kg	120kg/h	170RPM
MC-22S	Full S.S Meat Mincer	220V	1.1kW	430*290*400	19kg	220kg/h	170RPM
MC-RY08	Full S.S Meat Mincer	220V	0.55kW	580*310*360	22kg	120kg/h	187RPM
MC-RY12	Full S.S Meat Mincer	220V	1.1kW	500*260*315	22.5kg	120kg/h	187RPM
MC-RY22	Full S.S Meat Mincer	220V	1.5kW	505*260*315	26.5kg	220kg/h	220RPM
MC-RY32	Full S.S Meat Mincer	220V	1.8kW	505*260*315	28.5kg	220kg/h	220RPM

Vegetable Cutter & Meat Slicer



Model	Product Name	Power	Voltage	Size(mm)	N.W.	Capacity
HLC-300	Vegetable Cutter	220V 50Hz	550W	565*295*565	22.2kg	-
HLC-300AL	Vegetable Cutter	220V 50Hz	550W	540*310*550	22.2kg	-
HBS-300A	Meat Slicer	220V 50Hz	250W	620*530*500	22.5kg	0.2-15mm
HBS-250A	Meat Slicer	220V 50Hz	150W	575*465*415	16.5kg	0.2-15mm
HBS-220B	Meat Slicer	220V 50Hz	120W	415*336*339	12kg	0.2-15mm
HBS-220JS	Meat Slicer	220V 50Hz	120W	520*420*380	12.3	0.2-12mm



HS-1



Gas stock pot burner

Model #	010202046
Product dimension	460x550x502mm
Front panel thickness	1.2mm
Power	NG: 76000BTU/22.27KW LPG: 50000BTU/14.65KW
Gas Consumption	NG: 1.999m ³ /hour LPG: 1.3152m ³ /hour
Burner type	American type
Burner material	Cast Iron
Net Weight	41kg



HS-1B

Gas stock pot burner

Model #	010202046B
Product dimension	460x1085x549mm
Front panel thickness	1.2mm
Power	NG: 152000BTU/44.54KW LPG: 100000BTU/29.3KW
Gas Consumption	NG: 3.998m ³ /hour LPG: 2.6304m ³ /hour
Burner type	American type
Burner material	Cast Iron
Net Weight	70kg



HS-2



2 head Gas Burner

Model #	010202047
Product dimension	305x762x344mm 12"
Front panel thickness	1.2mm
Power	30000BTUx2=60000BTU/17.58KW
Gas Consumption	NG: 1.578m ³ /hour LPG: 0.6798m ³ /hour
Burner type	American type
Burner material	Cast Iron
Net Weight	31kg



HS-4



4 head Gas Burner

Model #	010202048
Product dimension	609x762x344mm 24"
Front panel thickness	1.2mm
Power	30000BTUx4=120000BTU/35.16KW
Gas Consumption	NG: 3.156m ³ /hour LPG: 1.3596m ³ /hour
Burner type	American type
Burner material	Cast Iron
Net Weight	51kg



HS-6



6 head Gas Burner

Model #	010202049
Product dimension	914x762x344mm 36"
Front panel thickness	1.2mm
Power	30000BTUx6=180000BTU/52.75KW
Gas Consumption	NG: 4.735m ³ /hour LPG: 2.0393m ³ /hour
Burner type	American type
Burner material	Cast Iron
Net Weight	71kg



HLS-2

2 head Gas Burner

Model #	010202076
Product dimension	300x690x350mm
Grate Size	300x300mm
Power	30000BTUx2=60000BTU/17.58KW
Gas Consumption	NG: 1.578m ³ /hour LPG: 0.6798m ³ /hour
Burner type	American type
Burner material	Cast Iron
Net Weight	42kg



HLS-4

4 head Gas Burner

Model #	010202077
Product dimension	600x690x350mm
Grate Size	300x300mm
Power	30000BTUx4=120000BTU/35.16KW
Gas Consumption	NG: 3.156m ³ /hour LPG: 1.3596m ³ /hour
Burner type	American type
Burner material	Cast Iron
Net Weight	70kg



HLS-6

6 head Gas Burner

Model #	010202078
Product dimension	900x690x350mm
Grate Size	300x300mmx6
Power	30000BTUx6=180000BTU/52.75KW
Gas Consumption	NG: 4.735m ³ /hour LPG: 2.0393m ³ /hour
Burner type	American type
Burner material	Cast Iron
Net Weight	99kg

HRC-14



14" Gas Charbroiler

Project code	010202042
Product dimension	356x768x414mm 14"
Grill plate	W135xD530mm x 2pcs
Power	20000BTUx3=40000BTU/11.72KW
Gas Consumption	NG: 1.052m ³ /hour LPG: 0.4532m ³ /hour
Burner type	American type
Burner material	Cast Iron
Net Weight	56kg

HRC-24



24" Gas Charbroiler

Project code	010202043
Product dimension	609x768x414mm 24"
Grill plate	W135xD530mm x 4pcs
Power	20000BTUx4=80000BTU/23.44KW
Gas Consumption	NG: 2.104m ³ /hour LPG: 0.9064m ³ /hour
Burner type	American type
Burner material	Cast Iron
Net Weight	94kg

HRC-36



36" Gas Charbroiler

Project code	010202044
Product dimension	914x768x414mm 36"
Grill plate	W135xD530mm x 6pcs
Power	20000BTUx6=120000BTU/35.16KW
Gas Consumption	NG: 3.156m ³ /hour LPG: 1.3596m ³ /hour
Burner type	American type
Burner material	Cast Iron
Net Weight	134kg

HRC-48



48" Gas Charbroiler

Project code	010202045
Product dimension	1219x768x414mm 48"
Grill plate	W135xD530mm x 8pcs
Power	20000BTUx8=160000BTU/46.89KW
Gas Consumption	NG: 4.209m ³ /hour LPG: 1.8127m ³ /hour
Burner type	American type
Burner material	Cast Iron
Net Weight	174kg

HLRC-400



14" Gas Charbroiler

Project code	010202079
Product dimension	404x633x405mm
Grill plate	150x470mm x1 + 100x470mmx1
Power	30,000BTUx1=30,000BTU/8.79KW
Gas Consumption	NG:0.789m ³ /h LPG:0.34m ³ /h
Burner type	American type
Burner material	Stainless Steel
Net Weight	31kg

HLRC-600



24" Gas Charbroiler

Project code	010202080
Product dimension	604x663x405mm
Grill plate	150x470mm x 4pcs
Power	30,000BTUx2=60,000BTU/17.58KW
Gas Consumption	NG: 1.578m ³ /hour LPG: 0.6798m ³ /hour
Burner type	American type
Burner material	Stainless Steel
Net Weight	43.5kg

HLRC-900



36" Gas Charbroiler

Project code	010202081
Product dimension	904x663x405mm
Grill plate	150x470mm x 6pcs
Power	30,000BTUx3=90,000BTU/26.37KW
Gas Consumption	NG: 2.367m ³ /hour LPG: 1.02m ³ /hour
Burner type	American type
Burner material	Stainless Steel
Net Weight	65kg

HLRC-1200



48" Gas Charbroiler

Project code	010202082
Product dimension	1204x663x405mm
Grill plate	150x470mm x 8pcs
Power	30000BTUx4=120000TU/35.16KW
Gas Consumption	NG: 3.156m ³ /hour LPG: 1.3596m ³ /hour
Burner type	American type
Burner material	Stainless Steel
Net Weight	98kg

HRG-24



24" Gas Griddle

Model #	010202039
Product dimension	612x836x442mm
Front panel thickness	1.2mm
Power	30000BTUx2=60000BTU/17.58KW
Gas Consumption	NG: 1.578m ³ /hour LPG: 0.6798m ³ /hour
Burner type	American type
Burner material	Cast Iron, H shape
Net Weight	91kg

HRG-48



48" Gas Griddle

Project code	010202041
Product dimension	1222x836x442mm
Griddle dimension	1216x612mm
Power	30000BTUx4=120000TU/35.16KW
Gas Consumption	NG: 3.156m ³ /hour LPG: 1.3596m ³ /hour
Burner type	American type
Burner material	Cast Iron, H shape
Net Weight	169kg

HRG-36



36" Gas Griddle

Project code	010202040
Product dimension	917x836x442mm
Griddle dimension	911x612mm
Power	30000BTUx3=90000BTU/26.37KW
Gas Consumption	NG: 2.367m ³ /hour LPG: 1.0197m ³ /hour
Burner type	American type
Burner material	Cast Iron, H shape
Net Weight	129kg

HLRG-400



18" Gas Griddle

Project code	010202083
Product dimension	456x663x405mm
Griddle plate size	451.5*482mm
Plate thickness	16mm; 5/8 inch
Power	30,000BTUx1=30,
Gas Consumption	NG:0.789m ³ /h LPG:0.34m ³ /h
Burner type	American type
Burner material	Stainless steel, U shape
Net Weight	44.5kg

HLRG-600



24" Gas Griddle

Project code	010202084
Product dimension	604x663x405mm
Griddle plate size	599.5*482mm
Plate thickness	16mm; 5/8 inch
Power	30,000BTUx2=60,000BTU/17.58KW
Gas Consumption	NG: 1.578m ³ /hour LPG: 0.6798m ³ /hour
Burner type	American type
Burner material	Stainless steel, U shape
Net Weight	72kg

HLRG-900



36" Gas Griddle

Project code	010202085
Product dimension	904x663x405mm
Griddle plate size	899.5*482mm
Plate thickness	16mm; 5/8 inch
Power	30,000BTUx3=90,000BTU/26.37KW
Gas Consumption	NG: 2.367m ³ /hour LPG: 1.02m ³ /hour
Burner type	American type
Burner material	Stainless steel, U shape
Net Weight	99kg

HLRG-1200



48" Gas Griddle

Project code	010202085X
Product dimension	1204x663x405mm
Griddle plate size	1199.5*482mm
Plate thickness	16mm; 5/8 inch
Power	30,000BTUx4=120,000BTU/35.17KW
Gas Consumption	NG: 3.156m ³ /hour LPG: 1.36m ³ /hour
Burner type	American type
Burner material	Stainless steel, U shape
Net Weight	126.5kg

HWS-4



2 head open burner

Model#	HWS-2
Product dimension	308x744x344mm
Burner	2
Power	30000BTUx2=60000BTU/17.58KW
Gas Consumption	NG: 1.578m ³ /hour LPG: 0.6798m ³ /hour
Burner type	American type
Burner material	Cast Iron
Net Weight	29.5kg

4 head open burner

Model#	HWS-4
Product dimension	613x744x344mm
Burner	4
Power	30000BTUx4=120000BTU/35.16KW
Gas Consumption	NG: 3.156m ³ /hour LPG: 1.3596m ³ /hour
Burner type	American type
Burner material	Cast Iron
Net Weight	51kg

6 head open burner

Model#	HWS-6
Product dimension	613x744x344mm
Burner	6
Power	30000BTUx6=180000BTU/52.75KW
Gas Consumption	NG: 4.735m ³ /hour LPG: 2.0393m ³ /hour
Burner type	American type
Burner material	Cast Iron
Net Weight	77kg

HWRC-48



24" Gas Griddle

Model#	HERG-24
Product dimension	610x789x405mm; 24"x31.05"x15.96"
Griddle dimension	606x564mm, thickness=1inch; 25mm
Power	30000BTUx2=60000BTU/17.58KW
Gas Consumption	NG: 1.578m ³ /hour LPG: 0.6798m ³ /hour
Burner type	American type; Cast Iron

36" Gas Griddle

Model#	HERG-36
Product dimension	910x789x405mm; 36"x31.05"x15.96"
Griddle dimension	906x564mm, thickness=1inch; 25mm
Power	30000BTUx3=90000BTU/26.37KW
Gas Consumption	NG: 2.367m ³ /hour LPG: 1.0197m ³ /hour
Burner type	American type; Cast Iron

48" Gas Griddle

Model#	HERG-48
Product dimension	1210x789x405mm; 48"x31.05"x15.96"
Griddle dimension	1206x564mm, thickness=1inch; 25mm
Power	30,000BTUx4=120,000BTU/35.17KW
Gas Consumption	NG: 3.156m ³ /hour LPG: 1.36m ³ /hour
Burner type	American type; Cast Iron

60" Gas Griddle

Model#	HERG-60
Product dimension	1510x789x405mm; 60"x31.05"x15.96"
Griddle dimension	1506x564mm, thickness=1inch; 25mm
Power	30,000BTUx5=150,000BTU/43.96KW
Gas Consumption	NG: 3.945m ³ /hour LPG: 1.699m ³ /hour
Burner type	American type; Cast Iron

HWRC-36



14" Gas Charbroiler

Project code	HWRC-14
Product dimension	356x768x414mm 14"x30.24"x16.30"
Grill plate	W135xD530mm x 2pcs
Power	20000BTUx3=40000BTU/11.72KW
Gas Consumption	NG: 1.052m ³ /hour LPG: 0.4532m ³ /hour
Burner type	American type
Burner material	Cast Iron
Net Weight	56kg

24" Gas Charbroiler

Project code	01020243
Product dimension	609x768x414mm 24"x30.24"x16.30"
Grill plate	W135xD530mm x 4pcs
Power	20000BTUx4=80000BTU/23.44KW
Gas Consumption	NG: 2.104m ³ /hour LPG: 0.9064m ³ /hour
Burner type	American type
Burner material	Cast Iron
Net Weight	94kg

36" Gas Charbroiler

Project code	01020244
Product dimension	914x768x414mm 36"x30.24"x16.30"
Grill plate	W135xD530mm x 6pcs
Power	20000BTUx6=120000BTU/35.16KW
Gas Consumption	NG: 3.156m ³ /hour LPG: 1.3596m ³ /hour
Burner type	American type
Burner material	Cast Iron
Net Weight	134kg

48" Gas Charbroiler

Project code	01020245
Product dimension	1219x768x414mm 48"x30.24"x16.30"
Grill plate	W135xD530mm x 8pcs
Power	20000BTUx8=160000BTU/46.89KW
Gas Consumption	NG: 4.209m ³ /hour LPG: 1.8127m ³ /hour
Burner type	American type
Burner material	Cast Iron
Net Weight	174kg

HERG-36T



24" Gas Griddle

Model#	HERG-24T
Product dimension	610x789x405mm; 24"x31.05"x15.96"
Griddle dimension	606x564mm, thickness=1inch; 25mm
Power	30000BTUx2=60000BTU/17.58KW
Gas Consumption	NG: 1.578m ³ /hour LPG: 0.6798m ³ /hour
Burner type	American type; Cast Iron
Temp range	200°F-450°F

48" Gas Griddle

Model#	HERG-48T
Product dimension	1210x789x405mm; 48"x31.05"x15.96"
Griddle dimension	1206x564mm, thickness=1inch; 25mm
Power	30,000BTUx4=120,000BTU/35.17KW
Gas Consumption	NG: 3.156m ³ /hour LPG: 1.36m ³ /hour
Burner type	American type; Cast Iron
Temp range	200°F-450°F

36" Gas Griddle

Model#	HERG-36T
Product dimension	910x789x405mm; 36"x31.05"x15.96"
Griddle dimension	906x564mm, thickness=1inch; 25mm
Power	30000BTUx3=90000BTU/26.37KW
Gas Consumption	NG: 2.367m ³ /hour LPG: 1.0197m ³ /hour
Burner type	American type; Cast Iron
Temp range	200°F-450°F

60" Gas Griddle

Model#	HERG-60T
Product dimension	1510x789x405mm; 60"x31.05"x15.96"
Griddle dimension	1506x564mm, thickness=1inch; 25mm
Power	30,000BTUx5=150,000BTU/43.96KW
Gas Consumption	NG: 3.945m ³ /hour LPG: 1.699m ³ /hour
Burner type	American type; Cast Iron
Temp range	200°F-450°F

HERG-48T



HFRF-90B

3 Burners Gas deep fryer



Project code	010202086
Product dimension	W394xD759*H1195mm
Temperature Setting	200°F to 400°F
Burner	3 tubes
Fry Comp.Capacity	35 - 40 lbs.
Power	30000BTUx3=90000BTU/26.37KW
Oil Capacity	18.5-23L, 15.8-18kg
Net Weight	61kg

HFRF-120B

4 Burners Gas deep fryer



Project code	010202087
Product dimension	W394xD759*H1195mm
Temperature Setting	200°F to 400°F
Burner	4 tubes
Fry Comp.Capacity	45 - 50 lbs, 20.5-22.6kg
Power	30000BTUx4=120000BTU/35.16KW
Oil Capacity	21.3-25L
Net Weight	66kg

HFRF-90B

5 Burners Gas deep fryer



Project code	010202088
Product dimension	W533xD759*H1195mm
Temperature Setting	200°F to 400°F
Burner	5 tubes
Fry Comp.Capacity	65 - 70 lbs, 29.5-31.75kg
Power	30000BTUx5=150000BTU/43.96KW
Oil Capacity	31-37L
Net Weight	75kg

HFSO-24

Floor type 4 burners with oven



Project code	010202277
Product dimension	W610xD827*H1532mm
Burner Power	30000BTUx4=120000BTU/35.16KW
Oven Power	30000BTU/8.79KW
Oven temperature	200°F to 600°F
Gas Consumption	NG: 3.946m3/h LPG: 1.6994m3/h
Net Weight	124kg

HFSO-36

Floor type 6 burners with oven



Project code	010202278
Product dimension	W915xD827*H1532mm
Burner Power	30000BTUx6=180000BTU/52.75KW
Oven Power	30000BTU/8.79KW
Oven temperature	200°F to 600°F
Gas Consumption	NG: 5.524m3/h LPG: 2.3782m3/h
Net Weight	170kg

HFSO-60

60" 10 Burner with two under oven



Project code	010202279
Product dimension	W1524xD827*H1532mm
Burner Power	30000BTUx10=300,000BTU/87.92KW
Oven Power	30000BTU/8.79KW X 2
Oven temperature	200°F to 600°F
Gas Consumption	NG: 9.469m3/h LPG: 4.078m3/h
Net Weight	290.5kg

HFSO-36-G12

36" 4 burners with oven and griddle



Project code	010202280
Product dimension	W915xD827*H1532mm
Burner Power	30000BTUx4=120000BTU/35.16KW
Oven Power	30000BTU/8.79KW X 2
Griddle Power	20,000BTU/5.86KW
Oven temperature	200°F to 550°F
Gas Consumption	NG: 4.472m3/h LPG: 1.926m3/h
Net Weight	187.5kg

HFSO-60-G24

6 burners with 2 oven, griddle & Salamander



Project code	010202282
Product dimension	W1524xD827*H1532mm
Burner Power	30000BTUx6=180000BTU/52.75KW
Oven Power	30000BTU/8.79KW X 2
Griddle Power	40,000BTU/11.72KW
Oven temperature	200°F to 550°F
Gas Consumption	NG: 7.365m3/h LPG: 3.172m3/h
Net Weight	312kg

HFSO-36-G24

36" 2 burners with oven and griddle



Project code	010202281
Product dimension	W915xD827*H1532mm
Burner Power	30000BTUx2=60000BTU/17.58KW
Oven Power	30000BTU/8.79KW X 2
Griddle Power	40,000BTU/11.72KW
Oven temperature	200°F to 550°F
Gas Consumption	NG: 3.42m3/h LPG: 1.47m3/h
Net Weight	195kg

HFSO-60-GS24

6 burners with 2 oven & griddle & Salamander



Project code	010202283
Product dimension	W1524xD827*H1532mm
Burner Power	30000BTUx6=180000BTU/52.75KW
Oven Power	30000BTU/8.79KW X 2
Griddle & Salamander Power	36,000BTU/10.55KW
Oven temperature	200°F to 550°F
Gas Consumption	NG: 7.26m3/h LPG: 3.172m3/h
Net Weight	331.5kg



HL-81 ELECTRIC FRYER

1-Tank 1-Basket 6 Liter Electric Fryer

Model	HL-81
Dimension (MM)	285x450x300
Package size (CM)	45x30x32
Temperature (°C)	50-200°C
Power(KW)	2.5
Voltage(V)	220
Weight (KG)	3.4



HL-82 ELECTRIC FRYER

2-Tank 2-Basket 6 Liter Electric Fryer

Model	HL-82
Dimension (MM)	550x420x300
Package size (CM)	58x44x32
Temperature (°C)	50-200°C
Power(KW)	2.5+2.5
Voltage(V)	220
Weight (KG)	6.8



HL-81A ELECTRIC FRYER

1-Tank 1-Basket 6 Liter Electric Fryer

Model	HL-81A
Dimension (MM)	275x420x300
Package size (CM)	45x30x32
Temperature (°C)	50-200°C
Power(KW)	2.5
Voltage(V)	220
Weight (KG)	3.7



HL-82A ELECTRIC FRYER

2-Tank 2-Basket 6 Liter Electric Fryer

Model	HL-82A
Dimension (MM)	550x420x300
Package size (CM)	58x44x32
Temperature (°C)	50-200°C
Power(KW)	2.5+2.5
Voltage(V)	220
Weight (KG)	6.8



HL-81D ELECTRIC FRYER

1-Tank 1-Basket 6 Liter Electric Fryer with timer

Model	HL-81D
Dimension (MM)	275x420x300
Package size (CM)	45x30x32
Temperature (°C)	50-200°C
Power(KW)	2.5
Voltage(V)	220
Weight (KG)	3.8



HL-82D ELECTRIC FRYER

2-Tank 2-Basket 6 Liter Electric Fryer with timer

Model	HL-82D
Dimension (MM)	550x420x300
Package size (CM)	58x44x32
Temperature (°C)	50-200°C
Power(KW)	2.5+2.5
Voltage(V)	220
Weight (KG)	7



HL-903 ELECTRIC FRYER

1-Tank 1-Basket 8 Liter Electric Fryer

Model	HL-903
Dimension (MM)	300x560x400
Package size (CM)	34x65x45
Temperature (°C)	50-200°C
Power(KW)	2.8
Voltage(V)	220
Weight (KG)	7.3



HL-904 ELECTRIC FRYER

2-Tank 2-Basket 8 Liter Electric Fryer

Model	HL-904
Dimension (MM)	600x560x400
Package size (CM)	62x65x45
Temperature (°C)	50-200°C
Power(KW)	2.8+2.8
Voltage(V)	220
Weight (KG)	11.6



HL-18 ELECTRIC FRYER

1-Tank 1-Basket 12 Liter Electric Fryer

Model	HL-18
Dimension (MM)	340x640x330
Package size (CM)	66x37x34
Temperature (°C)	50-200°C
Power(KW)	3
Voltage(V)	220
Weight (KG)	5.2



HL-18A ELECTRIC FRYER

1-Tank 1-Basket 12 Liter Electric Fryer

Model	HL-18A
Dimension (MM)	350x650x290
Package size (CM)	66x37x34
Temperature (°C)	50-200°C
Power(KW)	3
Voltage(V)	220
Weight (KG)	6



HL-903L ELECTRIC FRYER

1-Tank 1-Basket 8 Liter Electric Fryer

Model	HL-903L
Dimension (MM)	330x600x430
Package size (CM)	65x36x45
Temperature (°C)	50-200°C
Power(KW)	4.5
Voltage(V)	220
Weight (KG)	10



H-904L ELECTRIC FRYER

2-Tank 2-Basket 8 Liter Electric Fryer

Model	HL-904L
Dimension (MM)	650x600x430
Package size (CM)	68x65x45
Temperature (°C)	50-200°C
Power(KW)	4.5+4.5
Voltage(V)	220
Weight (KG)	17.6

Deep Fryer Series



HL-20L ELECTRIC FRYER

1-Tank 1-Basket 12 Liter Electric Fryer

Model	HL-20L
Dimension (MM)	530x590x390
Package size (CM)	56x62x41
Temperature (°C)	50-200°C
Power(KW)	5
Voltage(V)	220
Weight (KG)	14



HL-30L ELECTRIC FRYER

2-Tank 2-Basket 12 Liter Electric Fryer

Model	HL-30L
Dimension (MM)	580x610x410
Package size (CM)	61x64x43
Temperature (°C)	50-200°C
Power(KW)	6
Voltage(V)	220
Weight (KG)	16.1



HL-17L ELECTRIC FRYER

1-Tank 1-Basket 10 Liter Electric Fryer

Model	HL-17L
Dimension (MM)	550x510x410
Package size (CM)	62x55x45
Temperature (°C)	50-200°C
Power(KW)	4
Voltage(V)	220
Weight (KG)	13



HL-10L ELECTRIC FRYER

1-Tank 1-Basket 10 Liter Electric Fryer

Model	HL-10L
Dimension (MM)	480x310x310
Package size (CM)	51x33x33
Temperature (°C)	50-200°C
Power(KW)	3.25
Voltage(V)	220
Weight (KG)	7



HL-131V ELECTRIC FRYER

1-Tank 1-Basket 13 Liter Electric Fryer with oil tap

Model	HL-131V
Dimension (MM)	310x480x360
Package size (CM)	35x56x43
Temperature (°C)	50-200°C
Power(KW)	3.25
Voltage(V)	220
Weight (KG)	7.5



HL-132V ELECTRIC FRYER

2-Tank 2-Basket 13 Liter Electric Fryer with oil tap

Model	HL-132V
Dimension (MM)	630x480x360
Package size (CM)	67x56x43
Temperature (°C)	50-200°C
Power(KW)	3.25+3.25
Voltage(V)	220
Weight (KG)	14.7



HL-8L ELECTRIC FRYER

1-Tank 1-Basket 8 Liter Electric Fryer

Model	HL-8L
Dimension (MM)	270x420x370
Package size (CM)	44x29x35
Temperature (°C)	50-200°C
Power(KW)	3.25
Voltage(V)	220
Weight (KG)	5.5



HL-8L-2 ELECTRIC FRYER

2-Tank 2-Basket 8 Liter Electric Fryer

Model	HL-8L-2
Dimension (MM)	270x540x370
Package size (CM)	56x29x35
Temperature (°C)	50-200°C
Power(KW)	3.25+3.25
Voltage(V)	220
Weight (KG)	10



HL-11L ELECTRIC FRYER

1-Tank 1-Basket 11 Liter Electric Fryer

Model	HL-11L
Dimension (MM)	470x330x400
Package size (CM)	50x37x37
Temperature (°C)	50-200°C
Power(KW)	3.5
Voltage(V)	220
Weight (KG)	7.5



HL-11L-2 ELECTRIC FRYER

2-Tank 2-Basket 11 Liter Electric Fryer

Model	HL-11L-2
Dimension (MM)	450x660x400
Package size (CM)	47x68x37
Temperature (°C)	50-200°C
Power(KW)	3.5+3.5
Voltage(V)	220
Weight (KG)	14.5



HL-40 ELECTRIC FRYER

1-Tank 1-Basket 40 Liter Vertical Electric Fryer

Model	HL-40
Dimension (MM)	550x600x1020
Package size (CM)	60x65x110
Temperature (°C)	50-200°C
Power(KW)	11
Voltage(V)	220
Weight (KG)	-



HL-40A GAS FRYER

1-Tank 1-Basket 40 Liter Vertical Gas Fryer

Model	HL-40A
Dimension (MM)	550x600x1020
Package size (CM)	60x65x110
Temperature (°C)	-
Power(KW)	2800P
Voltage(V)	液化气
Weight (KG)	-



HL-71 GAS FRYER

1-Tank 1-Basket 6 Liter Gas Fryer

Model	HL-71
Dimension (MM)	500x310x440
Package size (CM)	54x35x48
Temperature (°C)	-
Power(KW)	2800P
Voltage(V)	gas
Weight (KG)	6.8



HL-72 GAS FRYER

2-Tank 2-Basket 6 Liter Gas Fryer

Model	HL-72
Dimension (MM)	500x560x440
Package size (CM)	61x54x48
Temperature (°C)	-
Power(KW)	2800P
Voltage(V)	gas
Weight (KG)	13.5



HL-26 ELECTRIC FRYER

1-Tank 2-Basket 25 Liter Vertical Electric Fryer

Model	HL-26
Dimension (MM)	730x400x1060
Package size (CM)	77x44x109
Temperature (°C)	50-200°C
Power(KW)	9
Voltage(V)	220
Weight (KG)	39



HL-26A GAS FRYER

1-Tank 2-Basket 25 Liter Vertical Electric Fryer

Model	HL-26A
Dimension (MM)	760x400x1060
Package size (CM)	77x44x109
Temperature (°C)	-
Power(KW)	2800P
Voltage(V)	gas
Weight (KG)	47

Griddle Series



HL-818 HL-818A Electric Griddle

Electric Griddle

Model	HL-818	HL-818A
Dimension (MM)	550x400x210	540x370x210
Package size (CM)	64x49x27	64x49x27
Temperature (°C)	50-300°C	50-300°C
Power(KW)	3	3
Voltage(V)	220	220
Weight (KG)	17	15



HL-718 HL-788 Gas Griddle

Gas Griddle

Model	HL-718	HL-788
Dimension (MM)	550x460x340	540x430x340
Package size (CM)	58x52x34	58x48x34
Temperature (°C)	-	-
Power(KW)	2800P	2800P
Voltage(V)	gas	gas
Weight (KG)	18	15



HL-820 Electric Griddle

Electric Griddle

Model	HL-820
Dimension (MM)	730x460x210
Package size (CM)	76x59x22
Temperature (°C)	50-300°C
Power(KW)	4.4
Voltage(V)	220
Weight (KG)	25.5



HL-822 Electric Griddle

half-grooved Electric Griddle

Model	HL-822
Dimension (MM)	730x460x210
Package size (CM)	76x59x22
Temperature (°C)	50-300°C
Power(KW)	4.4
Voltage(V)	220
Weight (KG)	25.5



HL-720 Gas Griddle

Gas Griddle

Model	HL-720
Dimension (MM)	730x530x340
Package size (CM)	77x56x34
Temperature (°C)	-
Power(KW)	2800P
Voltage(V)	gas
Weight (KG)	24



HL-722 Gas Griddle

half-grooved Gas Griddle

Model	HL-720
Dimension (MM)	730x530x340
Package size (CM)	77x56x34
Temperature (°C)	-
Power(KW)	2800P
Voltage(V)	gas
Weight (KG)	24.5



HL-818 Electric Griddle

Electric griddle full flat

Model	HL-818
Dimension (MM)	550x430x250
Package size (CM)	60x53x30
Temperature (°C)	50-300°C
Power(KW)	3
Voltage(V)	gas
Weight (KG)	17.5



HL-820 Electric Griddle

Electric griddle full flat

Model	HL-820
Dimension (MM)	730x490x250
Package size (CM)	80x59x30
Temperature (°C)	50-300°C
Power(KW)	4.4
Voltage(V)	gas
Weight (KG)	26

HL-730 Gas Griddle

Gas Griddle



Model	HL-730
Dimension (MM)	730x530x340
Package size (CM)	77x56x34
Temperature (°C)	-
Power(KW)	2800P
Voltage(V)	liquid gas
Weight (KG)	25

HL-36 Electric Griddle

Electric Griddle



Model	HL-36
Dimension (MM)	900x630x400
Package size (CM)	93x65x29
Temperature (°C)	50-200°C
Power(KW)	9
Voltage(V)	220
Weight (KG)	76

HL-36 Gas Griddle

Gas Griddle



Model	HL-36
Dimension (MM)	900x700x460
Package size (CM)	93x72x36
Temperature (°C)	-
Power(KW)	2800P
Voltage(V)	liquid gas
Weight (KG)	75

HL-48 Electric Griddle

Electric Griddle



Model	HL-48
Dimension (MM)	1200x630x400
Package size (CM)	123x65x29
Temperature (°C)	50-200°C
Power(KW)	12
Voltage(V)	220
Weight (KG)	100

HL-48 Gas Griddle

Gas Griddle



Model	HL-48
Dimension (MM)	1200x700x460
Package size (CM)	123x70x36
Temperature (°C)	-
Power(KW)	2800P
Voltage(V)	liquid gas
Weight (KG)	97

HL-01 Crepe Maker

Electric 1-Plate Crepe Maker



Model	HL-01
Dimension (MM)	480x450x240
Package size (CM)	53x50x26
Temperature (°C)	50-300°C
Power(KW)	3
Voltage(V)	220
Weight (KG)	14.5

HL-01C Crepe Maker

Gas 1-Plate Crepe Maker



Model	HL-01C
Dimension (MM)	480x450x240
Package size (CM)	53x50x26
Temperature (°C)	-
Power(KW)	2800P
Voltage(V)	liquid gas
Weight (KG)	13

HL-02 Crepe Maker

Electric 2-Plate Crepe Maker



Model	HL-02
Dimension (MM)	880x500x240
Package size (CM)	95x53x26
Temperature (°C)	50-300°C
Power(KW)	3+3
Voltage(V)	220
Weight (KG)	28

HL-02C Crepe Maker

Gas 2-Plate Crepe Maker



Model	HL-02C
Dimension (MM)	880x500x240
Package size (CM)	95x53x26
Temperature (°C)	-
Power(KW)	2800P
Voltage(V)	liquid gas
Weight (KG)	17

HL-811A Electric Contact Grill

Electric Contact Grill



Model	HL-811A
Dimension (MM)	370x300x240
Package size (CM)	45x37x27
Temperature (°C)	50-300°C
Power(KW)	1.8
Voltage(V)	220
Weight (KG)	12.5

HL-812A Electric Contact Grill

Electric Contact Grill



Model	HL-812A
Dimension (MM)	430x370x240
Package size (CM)	49x45x27
Temperature (°C)	50-300°C
Power(KW)	2.2
Voltage(V)	220
Weight (KG)	16.5

HL-811C Electric Contact Grill

Electric Contact Grill (flat)



Model	HL-811C
Dimension (MM)	370x300x240
Package size (CM)	45x37x27
Temperature (°C)	50-300°C
Power(KW)	1.8
Voltage(V)	220
Weight (KG)	12.5



HL-812B Electric Contact Grill

Electric Contact Grill

Model	HL-812B
Dimension (MM)	430x370x240
Package size (CM)	49x45x27
Temperature (°C)	50-300°C
Power(KW)	2.2
Voltage(V)	220
Weight (KG)	16.5



HL-813A Electric Contact Grill

Double Electric Contact Grill

Model	HL-813A
Dimension (MM)	560x370x240
Package size (CM)	65x45x27
Temperature (°C)	50-300°C
Power(KW)	1.8+1.8
Voltage(V)	220
Weight (KG)	23



HL-813E Electric Contact Grill

Double Electric Contact Grill (full grooved)

Model	HL-813E
Dimension (MM)	820x370x240
Package size (CM)	88x45x27
Temperature (°C)	50-300°C
Power(KW)	2.2+2.2
Voltage(V)	220
Weight (KG)	32



HL-813B Electric Contact Grill

Double Electric Contact Grill (full flat)

Model	HL-813B
Dimension (MM)	560x370x240
Package size (CM)	65x45x27
Temperature (°C)	50-300°C
Power(KW)	1.8+1.8
Voltage(V)	220
Weight (KG)	23

Bain Marie Series



HL-3 Bain Marie

3-head Electric Bain Marie with glass

Model	HL-3
Dimension (MM)	900x350x310
Package size (CM)	94x38x35
Temperature (°C)	30-85°C
Power(KW)	1.5
Voltage(V)	220
Weight (KG)	-



HL-4 Bain Marie

4-head Electric Bain Marie with glass

Model	HL-4
Dimension (MM)	1200x350x310
Package size (CM)	124x38x35
Temperature (°C)	30-85°C
Power(KW)	1.5
Voltage(V)	220
Weight (KG)	-



HL-5 Bain Marie

5-head Electric Bain Marie with glass

Model	HL-5
Dimension (MM)	1500x350x310
Package size (CM)	154x38x35
Temperature (°C)	30-85°C
Power(KW)	1.5
Voltage(V)	220
Weight (KG)	-

Food display warmer



HL-500 HL-600 Food display warmer

Food display warmer

Model	HL-500	HL-600
Dimension (MM)	400x400x750	500x500x850
Package size (CM)	52x46x81	62x56x91
Temperature (°C)	30-110°C	30-110°C
Power(KW)	1.5	1.5+1.5
Voltage(V)	220	220
Weight (KG)	24	28

Snack & Grill Equipment Series



HL-76A Fishball Grill

1-Head Electric Fishball Grill

Model	HL-76A
Dimension (MM)	255x455x180
Package size (CM)	54x31x23
Temperature (°C)	50-300°C
Power(KW)	2
Voltage(V)	220
Weight (KG)	3.7



HL-767 Fishball Grill

2-Head Electric Fishball Grill

Model	HL-767
Dimension (MM)	450x455x200
Package size (CM)	54x31x23
Temperature (°C)	50-300°C
Power(KW)	4
Voltage(V)	220
Weight (KG)	6.6



HL-77A Fishball Grill

1-Head Gas Fishball Grill

Model	HL-77A
Dimension (MM)	255x455x180
Package size (CM)	54x31x23
Temperature (°C)	-
Power(KW)	liquid gas
Voltage(V)	2800P
Weight (KG)	3.7



HL-777 Fishball Grill

2-Head Gas Fishball Grill

Model	HL-777
Dimension (MM)	465x475x210
Package size (CM)	53x52x23
Temperature (°C)	-
Power(KW)	liquid gas
Voltage(V)	2800P
Weight (KG)	6.1



HL-1F Waffle Baker

1-Plate Heart-shape Waffle Baker

Model	HL-1F
Dimension (MM)	510X350X250
Package size (CM)	53X41X30
Temperature (°C)	50-300°C
Power(KW)	2
Voltage(V)	220
Weight (KG)	11.5



HL-QQ-11 egg waffle maker

egg waffle maker

Model	HL-QQ-11
Dimension (MM)	220x360x280
Package size (CM)	49x30x32
Temperature (°C)	50-300°C
Power(KW)	1.4
Voltage(V)	220
Weight (KG)	5.5



HL-1E Waffle Baker

1-Plate Waffle Baker

Model	HL-1E
Dimension (MM)	510x350x250
Package size (CM)	53x41x30
Temperature (°C)	50-300°C
Power(KW)	2
Voltage(V)	220
Weight (KG)	11.3



HL-1D Cone Baker

1-Plate Cone Baker

Model	HL-1D
Dimension (MM)	250x350x250
Package size (CM)	39x27x30
Temperature (°C)	50-300°C
Power(KW)	1
Voltage(V)	220
Weight (KG)	5.8



HL-25A Crispy Machine

25-hole Crispy Machine

Model	HL-25A
Dimension (MM)	300x430x240
Package size (CM)	47x35x26
Temperature (°C)	50-300°C
Power(KW)	1.7
Voltage(V)	220
Weight (KG)	12



HL-50A Crispy Machine

50-hole Crispy Machine

Model	HL-50A
Dimension (MM)	600x300x190
Package size (CM)	65x38x22
Temperature (°C)	50-300°C
Power(KW)	1.7
Voltage(V)	220
Weight (KG)	10



HL-208D Waffle Maker

Lolly Waffle Maker

Model	HL-208D
Dimension (MM)	300x430x240
Package size (CM)	47x35x26
Temperature (°C)	50-300°C
Power(KW)	2
Voltage(V)	220
Weight (KG)	11



HL-5R Waffle Maker

5-Stick Hot Dog Waffle Maker

Model	HL-5R
Dimension (MM)	335x310x240
Package size (CM)	41x38x32
Temperature (°C)	50-300°C
Power(KW)	1.5
Voltage(V)	220
Weight (KG)	7.1



HL-28 egg tart maker

egg tart maker

Model	HL-28
Dimension (MM)	380x370x240
Package size (CM)	44x41x26
Temperature (°C)	50-300°C
Power(KW)	1.6
Voltage(V)	220
Weight (KG)	12



HL-25B Crispy Machine

25-hole Crispy Machine (up and down)

Model	HL-25B
Dimension (MM)	300x430x240
Package size (CM)	47x35x26
Temperature (°C)	50-300°C
Power(KW)	1.7
Voltage(V)	220
Weight (KG)	10



HL-10 Waffle Baker

10-grid Waffle Baker

Model	HL-10
Dimension (MM)	380x370x240
Package size (CM)	44x41x26
Temperature (°C)	50-300°C
Power(KW)	1.6
Voltage(V)	220
Weight (KG)	10



HL-10A-D Waffle Baker

4-grid Waffle Baker

Model	HL-10A-D
Dimension (MM)	300x430x240
Package size (CM)	47x35x26
Temperature (°C)	50-300°C
Power(KW)	2
Voltage(V)	220
Weight (KG)	11



HL-05B Crispy Machine

Plum Crispy Machine

Model	HL-05B
Dimension (MM)	330x370x240
Package size (CM)	41x38x26
Temperature (°C)	50-300°C
Power(KW)	1.6
Voltage(V)	220
Weight (KG)	9



HL-2E Waffle Baker

2-Plate Waffle Baker

Model	HL-2E
Dimension (MM)	500x410x280
Package size (CM)	56x45x30
Temperature (°C)	50-300°C
Power(KW)	1.2+1.2
Voltage(V)	220
Weight (KG)	10



HL-2 Waffle Baker

2-Plate rotate Waffle Baker

Model	HL-2
Dimension (MM)	500x410x280
Package size (CM)	56x45x30
Temperature (°C)	50-300°C
Power(KW)	1.2+1.2
Voltage(V)	220
Weight (KG)	10



HL-204-2 Waffle Baker

2-Plate Heart-shape Waffle Baker

Model	HL-204-2
Dimension (MM)	500x410x280
Package size (CM)	56x45x30
Temperature (°C)	50-300°C
Power(KW)	1.2+1.2
Voltage(V)	220
Weight (KG)	10



HL-2H Waffle Baker

2-grid Waffle Baker

Model	HL-2H
Dimension (MM)	360x300x270
Package size (CM)	39x33x30
Temperature (°C)	50-300°C
Power(KW)	2
Voltage(V)	220
Weight (KG)	9



HL-5T HL-6T Donut Maker

Donut Maker

Model	HL-5T	HL-6T
Dimension(MM)	335x310x240	385x310x240
Package size(CM)	41x38x32	42x40x32
Temperature(°C)	50-300°C	50-300°C
Power(KW)	1.5	1.5
Voltage(V)	220	220
Weight (KG)	7.1	8.4



HL-05C Popcorn Machine

Electric Popcorn Machine with cart

Model	HL-05C
Dimension (MM)	740x320x1500
Package size (CM)	79x37x155
Temperature (°C)	-
Power(KW)	1.4
Voltage(V)	220
Weight (KG)	29



HL-08C Popcorn Machine

Electric Popcorn Machine with cart

Model	HL-08C
Dimension (MM)	740x320x1470
Package size (CM)	79x37x155
Temperature (°C)	-
Power(KW)	1.4
Voltage(V)	220
Weight (KG)	29



HL-802 Popcorn Machine

Electric Popcorn Machine

Model	HL-802
Dimension (MM)	560x410x750
Package size (CM)	59x44x82
Temperature (°C)	-
Power(KW)	1.4
Voltage(V)	220
Weight (KG)	16



HL-803 Popcorn Machine

Electric Popcorn Machine

Model	HL-803
Dimension (MM)	500x360x690
Package size (CM)	54x40x76
Temperature (°C)	-
Power(KW)	1.4
Voltage(V)	220
Weight (KG)	15



HL-EB11 Popcorn Machine

Electric Popcorn Machine with warmer

Model	HL-EB11
Dimension (MM)	900x420x740
Package size (CM)	96x45x78
Temperature (°C)	-
Power(KW)	1.7
Voltage(V)	220
Weight (KG)	31



HL-03 Candy Floss Machine

Electric Candy Floss Machine

Model	HL-03
Dimension (MM)	440x440x500
Package size (CM)	47x47x53
Temperature (°C)	50-300°C
Power(KW)	1
Voltage(V)	220
Weight (KG)	11

Snack & Grill Equipment Series



HL-936 electric salamander
electric salamander

Model	HL-936
Dimension (MM)	610x310x280
Package size (CM)	66x35x31
Temperature (°C)	50-300°C
Power(KW)	2
Voltage(V)	220
Weight (KG)	11



HL-937 electric salamander
electric salamander

Model	HL-937
Dimension (MM)	790x450x490
Package size (CM)	84x49x52
Temperature (°C)	50-300°C
Power(KW)	4
Voltage(V)	220
Weight (KG)	23



HL-90 Shawarma Machine
Electric Shawarma Machine

Model	HL-90
Dimension (MM)	500x650x900
Package size (CM)	54x68x90
Temperature (°C)	50-300°C
Power(KW)	7.8
Voltage(V)	220
Weight (KG)	15



HL-92 Shawarma Machine
Gas Shawarma Machine

Model	HL-92
Dimension (MM)	500x650x1100
Package size (CM)	54x68x113
Temperature (°C)	50-300°C
Power(KW)	2800P
Voltage(V)	liquid gas
Weight (KG)	15

Fried Chicken & Hamburger Equipent Series



HL-2x2 Food Display Warmer
Hot air Food Display Warmer

Model	HL-2x2
Dimension (MM)	700x640x740
Package size (CM)	76x67x73
Temperature (°C)	30-85°C
Power(KW)	0.8
Voltage(V)	220
Weight (KG)	24



HL-2x3 Food Display Warmer
Hot air Food Display Warmer

Model	HL-2x3
Dimension (MM)	1100x640x740
Package size (CM)	113x67x73
Temperature (°C)	30-85°C
Power(KW)	1.5
Voltage(V)	220
Weight (KG)	34



HL-6P Food Display Warmer
Moisturizing Food Display Warmer

Model	HL-6P
Dimension (MM)	1500x770x860
Package size (CM)	153x79x87
Temperature (°C)	30-85°C
Power(KW)	2.4
Voltage(V)	220
Weight (KG)	53



HL-三合一 Food Display Warmer
Trapezoid Food Display Warmer (3 IN 1)

Model	HL-3-1
Dimension (MM)	1500x570x940
Package size (CM)	153x60x97
Temperature (°C)	30-85°C
Power(KW)	2
Voltage(V)	220
Weight (KG)	60



HL-2x4 Food Display Warmer
Hot air Food Display Warmer

Model	HL-2x4
Dimension (MM)	1200x640x740
Package size (CM)	123x67x73
Temperature (°C)	30-85°C
Power(KW)	1.5
Voltage(V)	220
Weight (KG)	37



HL-60-1 Food Display Warmer
Moisturizing Food Display Warmer

Model	HL-60-1
Dimension (MM)	660x437x640
Package size (CM)	69x47x67
Temperature (°C)	30-85°C
Power(KW)	1.8
Voltage(V)	220
Weight (KG)	28



HL-1P Food Display Warmer

Curved Glass food display warmer

Model	HL-1P
Dimension (MM)	355x425x485
Package size (CM)	39x48x51
Temperature (°C)	30-85°C
Power(KW)	0.85
Voltage(V)	220
Weight (KG)	16



HL-2P-1 Food Display Warmer

Curved Glass food display warmer

Model	HL-2P-1
Dimension (MM)	360x460x620
Package size (CM)	42x48x64
Temperature (°C)	30-85°C
Power(KW)	0.85
Voltage(V)	220
Weight (KG)	11



HL-3P Food Display Warmer

Curved Glass food display warmer

Model	HL-3P
Dimension (MM)	960x460x620
Package size (CM)	99x49x65
Temperature (°C)	30-85°C
Power(KW)	1.2
Voltage(V)	220
Weight (KG)	32



HL-VF-6 HL-VF-8 Chips warmer

Counter Top Potato Chips Display Warmer

Model	HL-VF-6	HL-VF-8
Dimension(MM)	600x700x670	800x700x670
Package size(CM)	74x64x68	74x84x68
Temperature(°C)	-	-
Power(KW)	0.8	0.8
Voltage(V)	220	220
Weight (KG)	24	27



HL-2P Food Display Warmer

Curved Glass food display warmer

Model	HL-2P
Dimension (MM)	665x500x620
Package size (CM)	72x52x64
Temperature (°C)	30-85°C
Power(KW)	0.85
Voltage(V)	220
Weight (KG)	17



HL-580 Food Display Warmer

Food Display Warmer

Model	HL-580
Dimension (MM)	640x360x530
Package size (CM)	67x40x56
Temperature (°C)	30-85°C
Power(KW)	1
Voltage(V)	220
Weight (KG)	31



HL-VF-10 Chips warmer

Pedestal Potato Chips Display Warmer

Model	HL-VF-10
Dimension (MM)	1000x700x1540
Package size (CM)	103x73x157
Temperature (°C)	-
Power(KW)	1
Voltage(V)	220
Weight (KG)	59



HL-212 HL-211 hamburger machine

two layer hamburger machine

Model	HL-212	HL-211
Dimension(MM)	390x660x280	390x430x280
Package size(CM)	73x45x35	48x45x27
Temperature(°C)	50-300°C	50-300°C
Power(KW)	2	0.8
Voltage(V)	220	220
Weight (KG)	18	12

红菱设备 | 烘焙至专
BAKERY EQUIPMENT EXPERT

■ GUANGZHOU HONGLING ELECTRIC HEATING EQUIPMENT CO.,LTD

广州红菱电热设备有限公司

■ GUANGZHOU GUANGLING KITCHEN EQUIPMENT CO.,LTD

广州市广菱厨具设备有限公司

Address: No.32, Helong Road, Baiyun District, Guangzhou 510425 China

Address: No.63-2, Road 7, Central village, Renhe Town, Baiyun District, Guangzhou 510470 China

Tel: +86-20-36366335 Fax: +86-20-36366335

Web: www.gzhldr.com

<http://hongling18.en.made-in-china.com>

<https://guangzhouhongling.en.alibaba.com>



Official Website



Made-in-China



Alibaba



These measurements are subject to change or cancellation ,No responsibility assumed for use of superseded or voided pages due to the printing process,the actual products may differ from those picture,for true matching purposes please refer to HONGLING chip samples.